

## A new species of the genus *Involvulus* Schrank from China (Coleoptera: Rhynchitidae)

Andrei LEGALOV

Siberian Zoological Museum,  
Institute of Animal Systematics and Ecology, SB RAS,  
Frunze street-11, Novosibirsk 630091, Russia  
e-mail: legalov@ngs.ru

**Taxonomy, new species, Coleoptera, Rhynchitidae, *Involvulus*, China**

**Abstract.** A new species from China is described and illustrated. *Involvulus yanmensis* sp. n. from Yunnan, like to *Involvulus gemmus* (Semenov-Tian-Shanskij et Ter-Minassian, 1937).

### INTRODUCTION

This genus *Involvulus* Schrank, 1798 is a small Palaearctic group of the leaf-rolling weevils with five species. The genus include *I. baojiensis* Legalov, 2007 from Shaanxi, *I. cupreus* (Linnaeus, 1761) from Palaearctic, *I. cylindricollis* (Schilsky, 1906) from Far East, *I. gemmus* (Semenov-Tian-Shanskij et Ter-Minassian, 1937) from Eastern, Central and South China, and *I. yanmensis* Legalov sp. n. from Yunnan. In materials given by R. Dunda, there was one new species that is described in this work. The present paper continues the author's research of Asian Rhynchitidae (Legalov, 2000 (2001), 2001, 2002, 2002 (2003), 2003, 2004a, 2004b, 2004c, 2006a, 2006b, 2006c, 2007, 2008, 2009; Legalov & Fremuth, 2002; Legalov & Liu, 2005; Legalov & Korotyaev, 2006).

### MATERIAL AND METHODS

Types are stored in the following collections and museums: NMPC - National Museum of Natural History (Czech Republic: Prague); RDP - R. Dunda Collection (Czech Republic: Prague).

### TAXONOMY

***Involvulus yanmensis* sp. n.**

(Figs 1, 3-4)

**Type material.** Holotype (♂): "China, Yunnan, Yanmen, 13-23.6.2005, E. Kucera", (NMPC). Paratype (1 ♂): the same data as holotype, (RDP).

**Description.** Body black. Elytra goldish-bronze. Body with dense dark semierect setae.

Male. Rostrum long, 4.8-5.2 times longer than wide, 1.20-1.24 times longer than pronotum, weakly curved, weakly widened to the apex, almost smooth. Antennae attached before the rostrum base. Eyes large, weakly convex. Forehead flat, wide, densely punctate. Vertex convex, densely punctate. Temples short, weakly transversally wrinkled.

Antennae thin and long, reaching pronotum middle. Scapus and 1<sup>st</sup> segment of funicle oval, of equal length. 2<sup>nd</sup>-4<sup>th</sup> segments elongated. 2<sup>nd</sup> segment longer than 1<sup>st</sup> segment. 3<sup>rd</sup> segment shorter than 2<sup>nd</sup> segment. 4<sup>th</sup> segment shorter than 3<sup>rd</sup> segment. 5<sup>th</sup> and 6<sup>th</sup> segments trapezoid. 5<sup>th</sup> segment shorter than 4<sup>th</sup> segment. 6<sup>th</sup> segment longer than 5<sup>th</sup> segment. 7<sup>th</sup> segment almost rounded. Clava wide, not compact. 1<sup>st</sup> and 2<sup>nd</sup> segments almost trapezoid. 1<sup>st</sup> segment longer than 2<sup>nd</sup> segment. 3<sup>rd</sup> segment tear-shaped, longer than 1<sup>st</sup> segment.

Pronotum campaniform, 1.06-1.18 times wider than length. Sides weakly rounded. Disk convex, rough rugosity-punctate. Greatest width in middle or before middle. Scutellum trapezoid, wide.

Elytra almost rectangular, 1.06-1.18 times longer than wide. Greatest width behind middle. Humeri weakly convex. Intervals wide, convex, with one row of small points. Striae wide. Points in them large and deep.

Prothorax punctate. Mesothorax and mesepisternum densely punctate. Metathorax sparsely punctate. Metepisternum densely punctate. Abdomen convex, finely punctate. 1<sup>st</sup> and 2<sup>nd</sup> ventrites wide. 3<sup>rd</sup> and 4<sup>th</sup> ventrites narrower. 5<sup>th</sup> ventrite very narrow. Pygidium convex, sparsely punctate.

Legs long. Femora widened. Tibiae almost straight, long, widened to apex. Protibiae narrower than meso- and metatibiae. Tarsi long. 1<sup>st</sup> segment triangular, elongated. 2<sup>nd</sup> segment wide-triangular. 3<sup>rd</sup> segment bilobed. Clausal segment elongated. Claws with long teeth.

Length of body: 4.1-4.4 mm.

Female. Unknown.

**Differential diagnosis.** The new species *Involvulus yanmensis* sp. n. is like to *I. gemmus* (Semenov-Tian-Shanskij et Ter-Minassian, 1937) but differs by the wide body, more densely punctate forehead, more coarsely punctate pronotum, wider striae of the elytra and form of sclerites of the endophallus (Figs 1-6).

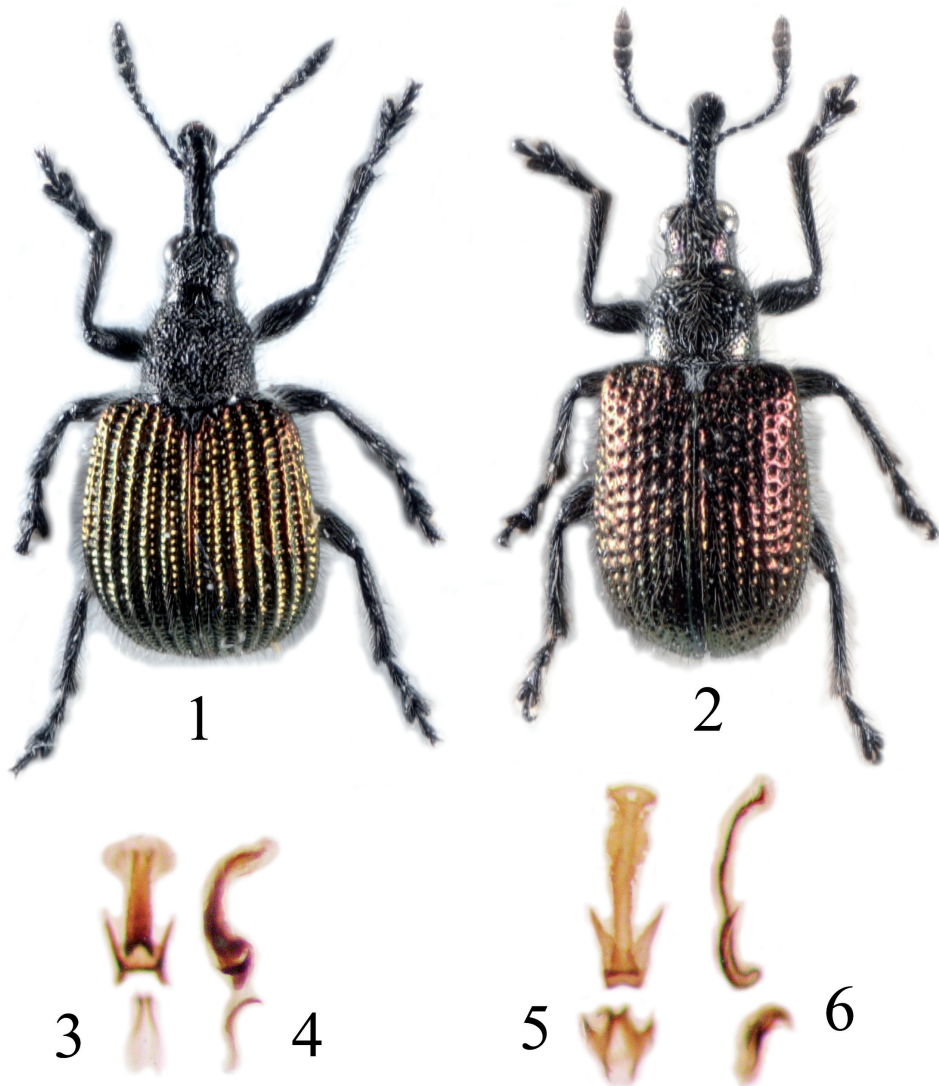
**Distribution.** Known from the type locality only.

**Etymology.** The name is formed from the location “Yanmen” - “yanmensis”.

ACKNOWLEDGEMENTS. I wish to thank R. Dunda (Prague, Czech Republic), J. Hájek (Prague, Czech Republic), B. A. Korotyaev (Saint Petersburg, Russia), for help with the work.

## REFERENCES

- LEGALOV A. A. 2000 (2001): *Sveltanaebyctiscus* gen.n., eine neue Gattung der Tribus Byctiscini aus dem Fernen Osten (Coleoptera, Attelabidae). *Russian Entomological Journal* 9(4): 341-343.
- LEGALOV A. A. 2001: Revision der holarktischen Auletini (Coleoptera, Attelabidae). *Russian Entomological Journal* 10(1): 33-66.



Figs 1-6. *Involvulus* spp.: 1- *I. yanmensis* (habitus, dorsal view, paratype); 2- *I. gemmus* (habitus, dorsal view, Yunnan); 3- *I. yanmensis* (armament of the endophallus, dorsal view); 4- *I. yanmensis* (armament of the endophallus, lateral view); 5- *I. gemmus* (armament of the endophallus, dorsal view); 6- *I. gemmus* (armament of the endophallus, lateral view).

- LEGALOV A. A. 2002: Species of the genus *Lasiorrhynchites* (Coleoptera, Rhynchitidae) in the Far Eastern fauna. *Entomological Review* 82(8): 1099-1101.
- LEGALOV A. A. & FREMUTH J. 2002: Neue Arten der Familie Rhynchitidae (Coleoptera) aus der Türkei. *Russian Entomological Journal* 11(2): 215-219.
- LEGALOV A. A. 2002 (2003): A new species of the genus *Temnocerus* Thunberg, 1815 (Coleoptera, Rhynchitidae) from Japan. *Russian Entomological Journal* 11(4): 409-410.
- LEGALOV A. A. 2003: *Taxonomy, classification and phylogeny of the leaf-rolling weevils (Coleoptera: Rhynchitidae, Attelabidae) of the world fauna*. Novosibirsk: CD-R 0320301200. 733+350 p. (641 Mb.) [in Russian].
- LEGALOV A. A. 2004a: A new species of the genus *Involvulus* (Coleoptera, Rhynchitidae) from the South of the Far East Russia. *Zoological Herald* 38(1): 85-87. (in Russian).
- LEGALOV A. A. 2004b: New data of the leaf-rolling weevils (Coleoptera: Rhynchitidae, Attelabidae) of the world fauna with description of 35 new taxons. *Baltic Journal of Coleopterology* 4(1): 63-88.
- LEGALOV A. A. 2004c: A new species of the genus *Haplorhynchites* Voss (Coleoptera, Rhynchitidae) from India. *Entomological Review* 84(9): 994-997.
- LEGALOV A. A. & LIU N. 2005: New leaf-rolling weevils (Coleoptera: Rhynchitidae, Attelabidae) from China. *Baltic Journal of Coleopterology* 5(2): 99-132.
- LEGALOV A. A. 2006a: Three new species of the leaf-rolling weevils (Coleoptera: Rhynchitidae, Attelabidae) from Russia, China and Korea. *Baltic Journal of Coleopterology* 6(1): 15-22.
- LEGALOV A. A. 2006b: Two new species of the genus *Deporaus* Sam. (Coleoptera: Rhynchitidae) from the Russian Far East and China. *Far Eastern Entomologist* 164: 1-6.
- LEGALOV A. A. 2006c: To the knowledge of the genus *Temnocerus* Thunberg, 1815 (Coleoptera: Rhynchitidae). *Far Eastern Entomologist* 165: 1-14.
- LEGALOV A. A. & KOROTYAEV B. A. 2006: A new species of the genus *Temnocerus* Thunb. (Coleoptera: Rhynchitidae) from Kazakhstan. *Baltic Journal of Coleopterology* 6(2): 125-127.
- LEGALOV A. A. 2007: *Leaf-rolling weevils (Coleoptera: Rhynchitidae, Attelabidae) of the world fauna*. Novosibirsk: Agro-Siberia. 523 pp.
- LEGALOV A. A. 2008: New species of the tribe Byctiscini (Coleoptera, Curculionidae) from Yunnan. *Baltic Journal of Coleopterology* 8(1): 49-54.
- LEGALOV A. A. 2009: New species and new records of the Rhynchitid-beetles (Coleoptera, Rhynchitidae) from Asia. *Amurian Zoological Journal* 1(1): 30-36.

Received: 18.2.2009  
Accepted: 28.2.2009