

## Collecting records of Dermestidae (Coleoptera) from Laos with description of a new species

Takanobu KITANO<sup>1)</sup> & Jiří HÁVA<sup>2,3)</sup>

<sup>1)</sup> Entomological laboratory, College of Agriculture,  
Ehime University, 3-5-7 Tarumi, Matsuyama city, 790-8566, Japan

<sup>2)</sup> Department of Forest Protection and GM, Faculty of Forestry and Wood Sciences,  
Czech University of Life Sciences

Kamýcká 1176, CZ-165 21, Prague 6 - Suchbát, Czech Republic

<sup>3)</sup> Private Entomological Laboratory & Collection,  
Rýznerova 37/37, CZ-252 62 Únětice u Prahy, Prague-west, Czech Republic

Email: jh.dermestidae@volny.cz

**Taxonomy, faunistics, new species, Coleoptera, Dermestidae, Laos**

**Abstract.** *Orphinus* (s. str.) *yamasakoi* sp. nov. is described, illustrated and compared with similar species. *Orphinus* (s. str.) *thailandicus* Háva 2012 is newly recorded from Laos.

### INTRODUCTION

The Dermestid fauna of Laos is little known, and only 17 species have been recorded until now (Háva, 2003, 2004, 2008, 2012, Háva and Herrmann, 2010). Dermestids preserved in the Ehime University Museum are listed in the work presented here.

### MATERIAL AND METHODS

The specimens examined are deposited in the Ehime University Museum. They are a part of the insect collection made by Nobuo Ohbayashi, Takashi Kurihara and Junsuke Yamasako, members of the Entomological Laboratory of Ehime University. Over the last ten years, they repeatedly explored Laos and collected insects there.

The material was determined, dissected and illustrated by using a stereomicroscope.

### RESULTS

#### Subfamily Dermestinae

#### *Dermestes* (*Dermestinus*) *maculatus* DeGeer, 1774

**Material examined.** Laos, Xam Neua, Houa Phon, alt. ca. 1000 m, 16.vi.2003, 4 exx., N. Ohbayashi; Ban Dangmakhai, Tha Ngon National Park, alt. ca. 1700 m, 9.v.2008, 2 exx., J. Yamasako leg.

**Remarks.** The specimens examined were collected from dried fishes displayed in a shop at Xam Neua and captured from a skull of water buffalo at Ban Dangmakhai.

### Subfamily Attageninae

#### *Attagenus unicolor* (Brahm, 1791)

**Material examined.** Laos, Ban Dongmakhai, North of Vientiane 25 km, N. 18°04'/E. 102°40', alt. ca. 1700 m, 1-2.i.2011coll. Host, IV. 2011 em., 1 ex., J. Yamasako leg.

**Remarks.** The specimen emerged from a dead blanch after the collecting trip. The peculiar female genitalia well agrees with that of *Attagenus unicolor* shown by Halstead (1981).

#### *Attagenus (Aethriostoma) undulatus* (Motschulsky, 1858)

**Material examined.** Laos, Bouy Dist., west of Phonsavan 40-50 km, Xieng Khouang Prov., alt. ca. 1200 m, 17-18.2008, 6 exx., J. Yamasako leg.; Nong Het, Xiang Khong, 16-18.vi.2005, 1 ex., J. Yamasako leg; Hinheup, North of Vientiane 13 km, Hinheup Dist., Vientiane Prov., 2.iv.2007, 3 exx., J. Yamasako leg.

**Remarks.** The specimens were collected from the flowers of *Castanopsis* sp. and *Dimocarpus longan*.

### Subfamily Megatomiinae Tribe Megatomini

#### *Orphinus* (s. str.) *yamasakoi* sp. nov. (Figs 1–5)

**Type material.** Holotype (♂): Laos, Hoerhen, Vang Vieng, Vientiane Prov., 10. iv.2007, J. Yamasako leg. Paratype. (1 ♀): the same data as holotype. Type material deposited in Ehime University Museum, Japan. Type specimens were labelled with red, printed label bearing the text as follows: "HOLOTYPE (or PARATYPE, respectively) *Orphinus* (*Orphinus*) *yamasakoi* sp. n. T. Kitano & J. Háva det. 2012".

**Description.** Body ovate, moderately convex above (Fig. 1). Length 2.8–2.9 mm; width 1.7–1.9 mm.

Colour black; tibiae dark brown; antennae, mouth parts, tarsi, claws pale brown; two elytral fasciae reddish orange. Elytra with two fasciae becoming pale towards suture: anterior fasciae W-shaped, protruding apicad behind shoulders and on sutural area; posterior fasciae protruding apicad at side of suture, apart from elytral apices. Pubescence: frons covered with whitish brown pubescence; eyes with short, bristling, erect, black setae; pronotum with long, whitish brown ones; elytra with black pubescence; elytral fasciae with long, whitish brown; undersurface except for prosternum with recumbent pale pubescence.

Head mat, densely punctate. Antennae 11-segmented (Fig. 2): scape large, with long pubescence; pedicel moniliform; 3<sup>rd</sup> to 7<sup>th</sup> filiform; 3<sup>rd</sup> and 4<sup>th</sup> longer than wide; 5<sup>th</sup> as long as wide; 6<sup>th</sup> and 7<sup>th</sup> transverse; club pubescent and 4-segmented; 8<sup>th</sup> to 10<sup>th</sup> transverse,

progressively wider; 11<sup>th</sup> ovate. Pronotum shining, densely and finely punctate. Scutellum triangular, wider than long, sparsely punctate. Elytra widest at sides of shoulder, densely punctate; punctures larger and sparser than those of pronotum. Prosternum mat, somewhat rugose, finely and densely punctate; punctures confluent longitudinally at middle, and becoming finer and denser at sides; anterior margin convex below to conceal mouth parts. Hypomera finely and densely punctate; antennal cavities glabrous, occupying anterior half in male, and distinctly smaller, occupying anterior 1/3 in female. Mesosternum completely sulcate medially, finely and densely punctate at lateral elevated area. Mesosternum shining, finely and densely punctate; punctures becoming larger laterally. Abdomen finely and densely punctate.

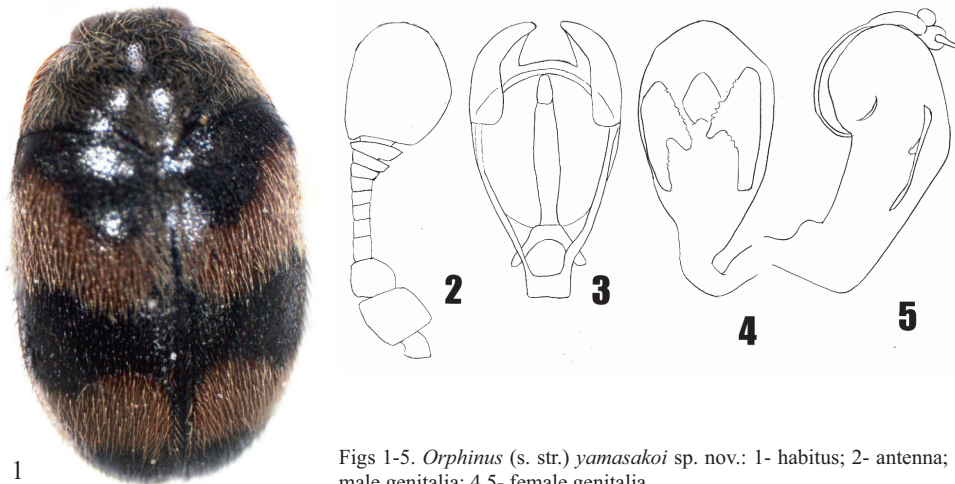
Male genitalia: paramere well curved inward (Fig. 3).

Female genitalia. Bursa copulatrix (Figs 4, 5) with a pair of plate, inner margin of which being fringed with dentations.

**Differential diagnosis.** The species resembles *Orphinus* (s. str.) *hartmanni* Háva, 2001 by having developed transverse markings behind shoulders, but differs from latter by more gently curved paramere of male genitalia. This species is relatively unique as in the next points: antennal club small in both sexes, apart from the posterior margin of hypomeron; pronotum covered with long, conspicuous, whitish brown pubescence; elytra bifasciate; hypomeron with antennal cavity occupying only half the length.

Further *O. mediojunctus* Pic, 1938 is similar to this species by having reddish elytral transverse fasciae in the same part, which however, intersect each other to make 3 black spots between them; male genitalia differs in the shape of parameres and median lobe.

**Etymology.** The specific epithet is dedicated to the collector, Dr. Junsuke Yamasako.



Figs 1-5. *Orphinus* (s. str.) *yamasakoi* sp. nov.: 1- habitus; 2- antenna; 3- male genitalia; 4,5- female genitalia.

***Orphinus* (s. str.) *thailandicus* Háva, 2012**

(Fig. 6)

**Material examined.** Laos, Ban Phakkath, alt. ca. 1200 m, East of Phonsavan, 24–25 km, Xiengkhouang Prov., 25.iv.2007, 1 ex., J. Yamasako leg.; Laos, Vientiane prov., Ban Vangheua, 1000m, Phou Khao Khouay N.P., 55 km N of Vientiane, 102°49'E 18°27'N, 4-18.v.2005, 5 ex., P. Kresl lgt., J. Háva det. and coll.

**Remarks.** This four-spotted species will be soon described as a new species in another paper by the junior author. The large body (3.4 mm), four elytral red spots, and the circular antennal club of both sexes, and appendix of claws will serve to distinguish from the other species.

**Distribution.** Species recently described from Thailand, new to Laos.



Fig. 6. Habitus of *Orphinus* (s. str.) *thailandicus* Háva, 2012.



Fig. 7. Habitus of *Thaumaglossa rihai* Háva, 2002.

***Thaumaglossa hilleri* Reitter, 1881**

**Material examined.** Laos, West of Lak Sao 4 km, Bohkhamxai Prov., 23.v.2008, 1 ex., J. Yamasako; Ban Ban, Khom Dist., Xieng Khouang Prov., 5.iv.2007, 1 ex., J. Yamasako leg.

**Remarks.** One specimen was collected from *Mallotus* sp.

***Thaumaglossa rihai* Háva, 2002**

(Fig. 7)

**Material examined.** Laos, Mt. Phou Pan, Ban Saleui, Vam Neua, Houa Phan Prov., alt. ca. 1600-2000 m, 27.iv.-11.v.2007, 1 ex., J. Yamasako leg.

**Remarks.** The specimen was collected from flowers of *Castanopsis* sp.

## *Thaumaglossa rufocapillata* Redtenbacher, 1867

**Material examined.** Laos, Phu Phan, alt. ca. 1300-1700 m, Xam Neua, Houapan Prov., 19.v.2005, 1 ex., T. Kurihara leg.; Nong Het, Xiang Khoang, 16-18.vi.2005, 1 ex., J. Yamasako leg.; East Nong Het, Xieng Khouang Prov., 25.vi.2006, 1 ex., J. Yamasako leg.; Ban Saleui, Xam Neua, Houa Pan Prov., alt. ca. 1400 m, 6.v.2002, 1 ex., N. Ohbayashi leg.; ditto, alt. ca. 1400-1500 m, 20-24.vi.2003, 1 ex.

### Tribe Anthrenini

## *Anthrenus (Anthrenodes) macurifer* Reitter, 1881

**Material examined.** Laos, East Nong Het, Xieng Khouang Prov., 25.vi.2006, 1 ex., J. Yamasako leg.; Ban Saleui, Xam Neua, 30-31.iii.2005, 1 ex., J. Yamasako leg.; Ban Ban, Muang Khan, Xieng Khouang Prov., 5.iv.2007, 1 ex., N. Ohbayashi leg.; ditto, but J. Yamasako leg., 1 ex.

ACKNOWLEDGEMENTS. We would like to express our thanks to Drs. Nobuo Ohbayashi and Junsuke Yamasako for valuable information on sampling.

### REFERENCES

- HALSTEAD D. G. H. 1981: Taxonomic notes on some *Attagen* spp. associated with stored products, including a new black species from Africa (Coleoptera: Dermestidae). *Journal of Stored Products Research*, 17: 91-99.
- HÁVA J. 2003: World Catalogue of the Dermestidae (Coleoptera). *Studie a Zprávy Oblastního Muzea Praha-východ v Brandýse nad Labem a Staré Boleslavi*, Supplementum 1: 1-196.
- HÁVA J. 2004: *Dermestes (Dermestes) laosensis* sp. nov. (Coleoptera: Dermestidae) from Laos. *Acta Societatis Zoologicae Bohemicae* 68: 81-82.
- HÁVA J. 2008: Revision of the *Thaumaglossa tonkinea* species group (Coleoptera: Dermestidae: Megatominae) from the Oriental Region. *Calodema Supplementary Paper*, (86):1-6.
- HÁVA J. 2012: Catalogue of Dermestidae World (Coleoptera). Permanent World Wide Web electronic publication (open in 2004): <http://www.dermestidae.wz.cz>
- HÁVA J. & HERRMANN A. 2010: New faunistic records of Dermestidae. (Coleoptera) Part-4. *Latvijas Entomologs*, 48: 76-79.

Received: 15.3.2012

Accepted: 10.5.2012

