

**Contribution to the knowledge of Dermestidae (Coleoptera) deposited
in Museum National d' Histoire Naturelle, Paris, France**

Jiří HÁVA

Department of Forest Protection and Entomology,
Faculty of Forestry and Wood Sciences,
Czech University of Life Sciences,
Kamýcká 1176, CZ-165 21, Prague 6 - Suchbát, Czech Republic
e-mail: jh.dermestidae@volny.cz

Taxonomy, description, new species, new synonymy, new combination, lectotype designation, new records, Coleoptera, Dermestidae, *Attagenus*, *Cryptorhopalum*, *Hemirhopalum*, *Thaumaglossa*, *Trogoderma*, Oriental Region, Palaearctic Region, Neotropical Region

Abstract. A new species *Thaumaglossa oliversum* sp. nov. from Sumatra is described, illustrated and compared with similar species. The following new nomenclatural acts are proposed: *Thaumaglossa anthrenoides* (Pic, 1918) (= *Cryptorhopalum atrum* Pic, 1936 comb. nov., syn. nov.); *Attagenus similis* Mulsant et Rey, 1868 (= *Telopes posticalis* var. *brunneonotatus* Pic, 1894 syn. nov.); *Attagenus brunnescens* (Pic, 1904) (= *Attagenus fossor* Zhan-tiev, 2005 syn. nov.); *Attagenus subelongatus* (Pic, 1929) stat. nov.; *Hemirhopalum testaceipes* Pic, 1936 (= *Hemirhopalum elongatum* Pic, 1942 syn. nov.); *Hemirhopalum longipenne* Pic, 1916 (= *Hemirhopalum laticolle* Pic, 1927 syn. nov.); *Cryptorhopalum curtum* (Pic, 1942) comb. nov. (from *Hemirhopalum*); *Cryptorhopalum rusticolle* Pic, 1927 (= *Cryptorhopalum rufobrunneum* Pic, 1942 syn. nov., *Cryptorhopalum quadrisignatum* Pic, 1942 syn. nov., *Cryptorhopalum grandjeani* Pic, 1942 syn. nov.); *Cryptorhopalum laticolle* Pic, 1927 (= *Cryptorhopalum vagesignatum* Pic, 1942 syn. nov.); *Cryptorhopalum trifasciatum* Pic, 1927 (= *Cryptorhopalum cuespani* Herrmann, Háva & Kadej, 2015 syn. nov.). Lectotypes here designated for: *Cryptorhopalum baeri* Pic, 1916; *Cryptorhopalum callanganum* Pic, 1927; *Cryptorhopalum corumbanum* Pic, 1923; *Cryptorhopalum rugosipenne* Pic, 1916; *Cryptorhopalum hirsutum* Pic, 1927; *Cryptorhopalum presuturale* Pic, 1929; *Cryptorhopalum rufobrunneum* Pic, 1942; *Cryptorhopalum minor* Pic, 1942; *Cryptorhopalum nitidissimum* Pic, 1916. The following species are newly recorded: *Cryptorhopalum bolivianum* Pic, 1916 (Brazil, Paraguay); *Cryptorhopalum gounellei* Pic, 1916 (Peru); *Cryptorhopalum hirsutum* Pic, 1927 (Paraguay); *Cryptorhopalum brunnescente* Pic, 1916 (St. Lucia); *Cryptorhopalum rufum* Pic, 1942 (Costa Rica); *Cryptorhopalum rufipenne* Pic, 1916 (Panama); *Cryptorhopalum rufonotatum* Pic, 1916 (Brazil); *Cryptorhopalum diehli* Pic, 1954 (Bolivia); *Cryptorhopalum curtum* (Pic, 1942) (Brazil, Peru). All mentioned species is firstly illustrated.

INTRODUCTION

The family Dermestidae (Coleoptera: Bostrichoidea) currently consists of 62 genera, containing ca. 1600 species worldwide (Háva 2015).

During the determination in year 2017 of some Dermestidae (Coleoptera) deposited in the Museum National d' Histoire Naturelle, Paris, France, collectio generalis and collectio Maurice Pic I found a new species, new synonymy, new combination, new records and made designations of lectotypes for the mentioned taxa. The study is supplemented with material from other following museums.

MATERIAL AND METHODS

The following abbreviations were used in the present study:

FMHD Field Museum Natural History, Chicago, U.S.A.;

JHAC Private Entomological Laboratory & Collection, Jiří Háva, Prague-west, Czech Republic;

KUNM University of Kansas, Lawrence, U.S.A.;

MNHN Museum National d' Histoire Naturelle, Paris, France;

MUSM Museo de Historia de la Universidad Nacional Mayor de San Marcos, Lima, Peru;

MZHF Finnish Museum of Natural History, Helsinki, Finland;

NHMW Naturhistorisches Museum, Wien, Austria;

NHRS Naturhistoriska Riksmuseet Stockholm, Sweden.

The lectotype is designated in order to stabilize the nomenclature in the genus in accordance with Article 74.7.3. of the Code (ICZN 1999).

The size of the beetles or of their body parts can be useful in species recognition and thus, the following measurements were made:

Total length (TL) - linear distance from anterior margin of pronotum to apex of elytra.

Elytral width (EW) - maximum linear transverse distance.

The nomenclature and zoogeography follow Háva (2015a).

Individual labels are indicated by a single slash (/).

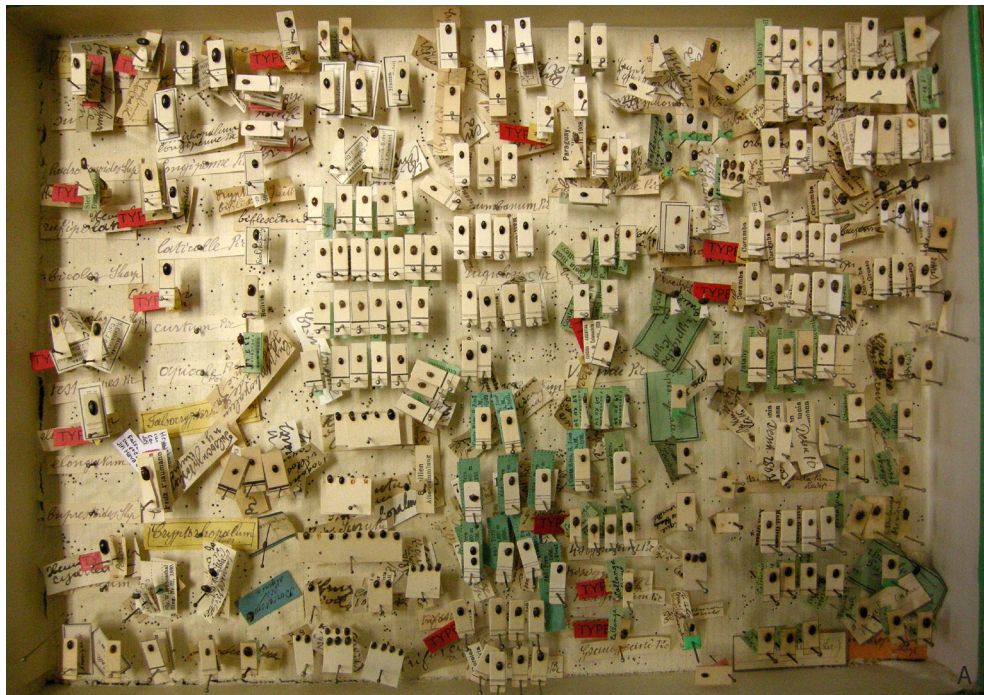


Fig. A. Part of collection Maurice Pic (*Cryptorhopalum* and *Hemirhopalum* spp.) in Museum National d' Histoire Naturelle, Paris, France.

All photos by author were taken by a Nikon Coolpix 990 digital camera through an MBS 10 binocular stereo microscope.

Specimen of the species described here are provided with a red, hand written label with text as follows: „HOLOTYPE *Thaumaglossa oliversum* sp. nov. Jiří Háva det. 2017”.

Specimens of the species designated here are provided with red labels with the text as follows: „Lectotype [or Paralectotype, respectively], *species name* Pic, J. Háva design. 2017”.

RESULTS

Genus *Thaumaglossa* Redtenbacher, 1867

Thaumaglossa oliversum sp. nov.

(Figs. 1-3)

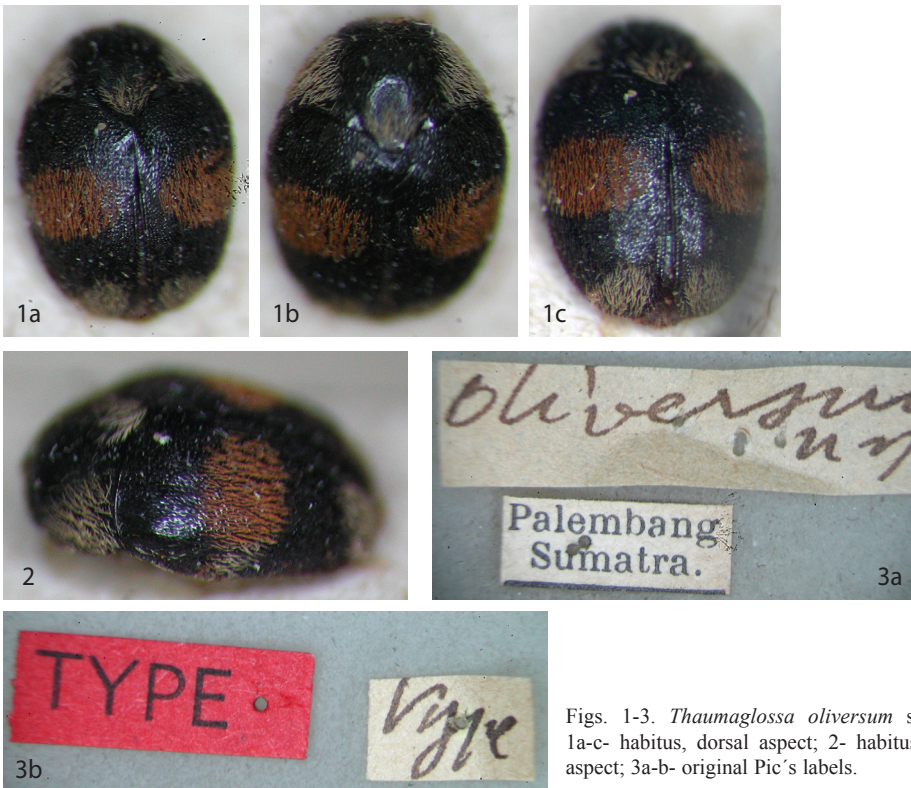
Type material. Holotype (♀): „Palembang, Sumatra“ / „*oliversum* n sp“ / „TYPE“ / „Type“, (MNHN).

Description. Body oval, black, covered by white, orange and black setation. Body measurements (in mm): TL 2.75, EW 2.00. Head densely punctured, shiny black, sparsely covered with short decumbent setation. Eyes quite large with nearly invisible, erect and extremely short microsetae. Ocellus distinctly present on front. Antennae with 11 antennomeres, antennomeres brown. The last two antennomeres build a distinct club densely covered with short brown setation; the terminal segment small. Maxillar and labial palpomeres brown. Pronotum shiny black, somewhat less coarsely and densely punctured than the head, sparsely covered with short decumbent white and black setation (lateral part and small spot near scutellum with white setation); pronotal lateral margins smooth, untoothed, narrowed from apical towards anterior edges. Scutellum shiny black, small and almost triangular, naked and without any punctuation. Elytra shiny black, covered by sparsely by the same kind of setation as pronotum, setae a little bit stronger and slightly more erect; humeri with flat bumps; each elytron with one orange spot in the middle, one left small white spot near epipleuron reached to orange spot, one apical white spot (Figs. 1-2). Epipleura and mesosternum of the same colour, punctures and setation as in the elytra. Legs and tarsi entirely light brown, sparsely covered with short light grey setation, tibia with a single row of short thin brown thorns on lateral edge. Abdominal ventrites black, dense and rough punctured, covered quite densely with decumbent white setation.

Differential diagnosis. The new species belong to „*Thaumaglossa laeta* species group“ and similar related species in the following table, but differs from them by the following characters.

	<i>T. oliversum</i> sp. nov.	<i>T. laeta</i> Arrow	<i>T. dembycky</i> Háva
Setation on pronotum	Female: Lateral part and small spot near scutellum with white setation	Male and female: Pronotum with white setation	Male: Lateral part and small spot near scutellum with white setation. Female: lateral and anterior part and small spot near scutellum with white setation.
Each elytron	Female: one orange spot in the middle; one left small white spot near epipleuron reached to orange spot; one apical white spot	Male and female: one orange-reddish spot in the middle	Male: one small white spot near scutellum; one orange spot in the middle. Female: one large, white spot near scutellum; one white spot near epipleuron not reached orange spot; one large white apical spot
Pygidium	Brown with yellow setation	Brown with golden setation	Male: black with black setation. Female: black with yellow setation

Name derivation. Named according to original designated name by Maurice Pic.



Figs. 1-3. *Thaumaglossa oliversum* sp. nov.: 1a-c- habitus, dorsal aspect; 2- habitus, lateral aspect; 3a-b- original Pic's labels.

Thaumaglossa anthrenoides (Pic, 1918)

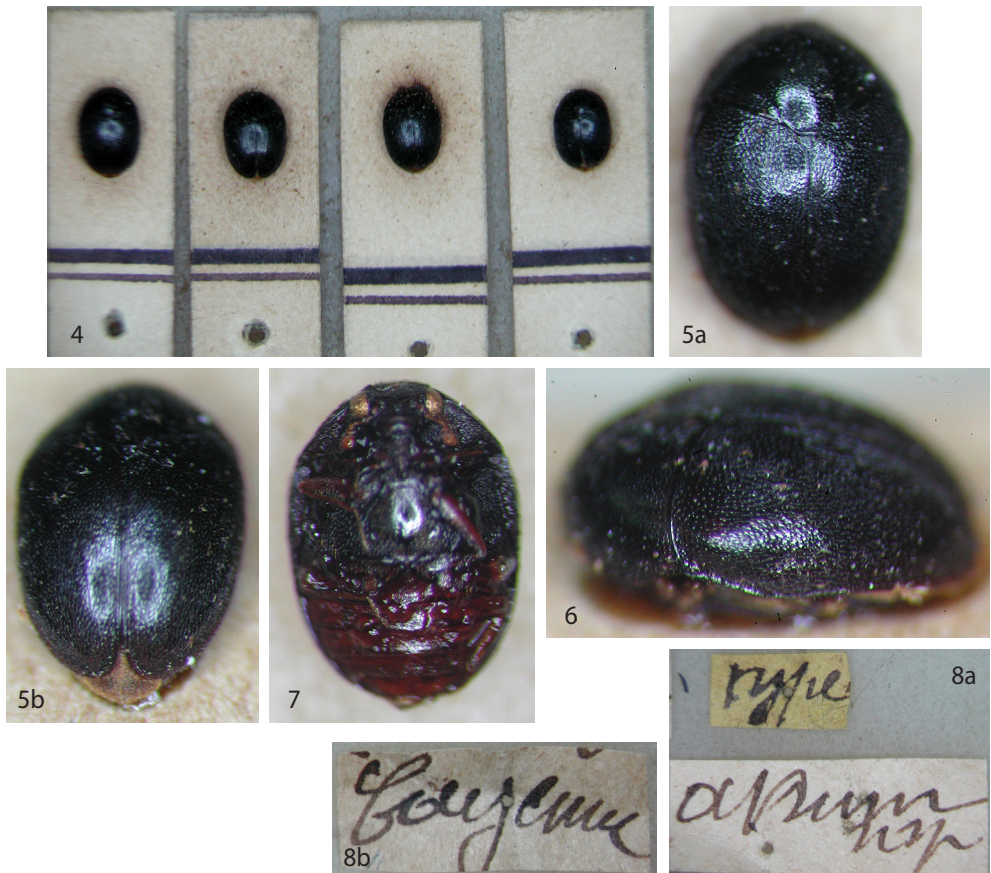
(Figs. 4-8)

Cryptorhopalum atrum Pic, 1936b: 193 **syn. nov.**

Type material. Syntypes (4 ♀♀): „Lougema“ / „atrum n sp“ / „TYPE“ / „Type“, (MNHN). 1 syntype here designated as lectotype and 3 as paralectotypes.

Remarks. According to study of type material *C. atrum* belongs to genus *Thaumaglossa* Redtenbacher, 1867 as *Thaumaglossa atrum* (Pic, 1936) comb. nov., but all morphological characters are identical with *T. anthrenoides* (Pic, 1918). *T. atrum* is a new junior subjective synonym of *T. anthrenoides*.

Distribution. Species known from Brazil, French Guiana and Honduras (Herrmann et al. 2017, Háva 2017), new for Costa Rica.



Figs. 4-8. *Cryptorhopalum atrum* Pic, syntypes: 4- syntype series; 5a-b- habitus, dorsal aspect; 6- habitus, lateral aspect; 7- habitus, ventral aspect; 8a-b- original labels.

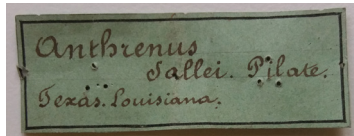
Genus *Trogoderma* Dejean, 1821

Trogoderma ornatum (Say, 1825)

(Figs. 9-10)

Material examined: „Anthrenus Sallei Pilate, Texas Louisiana“, 1 ♂, *Trogoderma ornatum* (Say), J. Háva det. 2017, (NMHN).

Remarks. In coll generalis presented one specimen (Fig. 9) with label (Fig. 10). The specimen belong to species *Trogoderma ornatum* (Say, 1825) and the *Anthrenus sallei* is an unpublished name for the species.



Figs. 9-10. *Anthrenus sallei*: 9- habitus, dorsal aspect; 10- original label.

10

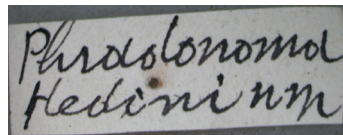
Genus *Paranovelsis* Casey, 1900

Paranovelsis quadricolor (Sumakov, 1907)

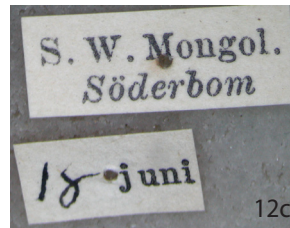
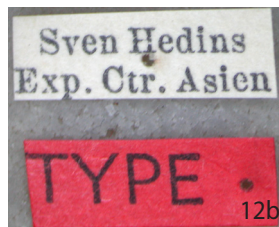
(Figs. 11-12)

Type material. Holotype (♀): „S. W. Mongol., Söderbom“ / „18 juni“ / „Sven Hedins, Exp. Ctr. Asien“ / „TYPE“ / „Phradonoma Hedini n sp“ / „Paranovelsis quadricolor (Sum.) J. Háva det. 2017“, (MNHN).

Additional material: „Mongolia mer., Sara chulsny Bul., 7.7.88, O. Majzlan lgt.“, 1 ♀, J. Háva det., (JHAC).



12a



Figs. 11-12. *Phradonoma hedini* Pic, holotype: 11- habitus, dorsal aspect; 12a-c- original labels.

Remarks. In coll M. Pic presented one specimen (Fig. 11) with labels (Fig. 12). The specimen belong to species *Paranovelsis quadricolor* (Sumakov, 1907) and the *Phradonoma hedini* is a new unpublished name for the species.

Genus *Attagenus* Latreille, 1802

Attagenus similaris Mulsant et Rey, 1868

(Figs. 13-14)

Telopes posticalis var. *brunneonotatus* Pic, 1894: 60 **syn. nov.**

Attagenus posticalis var. *brunneonotatus*: Mroczkowski, 1968: 89 (catalogue).

Attagenus brunneonotatus: Háva, 2015a: 3 (new status).

Type material. Syntype (♀): „Biskra“ / „v brunneonotatus Pic“ / „TYPE“, (MNHN).

Additional material: Tunisia mer., S of Kebili, Blidette, 25.3.2006, J. Batelka leg., 11 ex., J. Háva det., (JHAC).

Remarks. Pic (1894) described taxon *Telopes posticalis* var. *brunneonotatus* (syntype as in Fig. 13), Mroczkowski (1968) mentioned the taxon as *Attagenus posticalis* var. *brunneonotatus*, Háva (2015) stated it to be an independent species. According to recent study of type material all morphological characters are identical with species *Attagenus similaris* Mulsant et Rey, 1868. *Telopes posticalis* var. *brunneonotatus* Pic is a new junior synonym for *A. similaris*.

Distribution. Species known from Algeria, Libya, Morocco and Tunisia.



Figs. 13-14. *Telopes posticalis* var. *brunneonotatus* Pic, syntype: 13- habitus, dorsal aspect; 14- original labels.

Attagenus brunnescens (Pic, 1904)

(Figs. 15-16)

Attagenus brunnescens (Pic, 1904: 73).

Attagenus fossor Zhantiev, 2005: 1150 **syn. nov.**

Type material. Holotype (♀) *Attagenus brunnescens*: „Cheikli, (Syrie)“ / „brunnescens Pic“ / „TYPE“ / „Type“, (MNHN).

Holotype (♂) *Attagenus fossor*: „Iran, Gilan, Sang-Rud, Jirandeh, 15.vi.1996, R. Linnavuori“ / „Holotype *Attagenus fossor* Zhantiev“, (MZHF).

Remarks. According to study of type material of *Attagenus brunnescens* and *Attagenus fossor* showed that both species are identical. *A. fossor* is a new junior synonym for *brunnescens*.

Distribution. Species known from Turkey, Syria, Armenia and Iran.



Figs. 15-16. *Attagenus brunnescens* Pic, holotype: 15a-b- habitus; 16a-c- original labels.

***Attagenus subelongatus* (Pic, 1929) stat. nov.**
(Figs. 17-20)

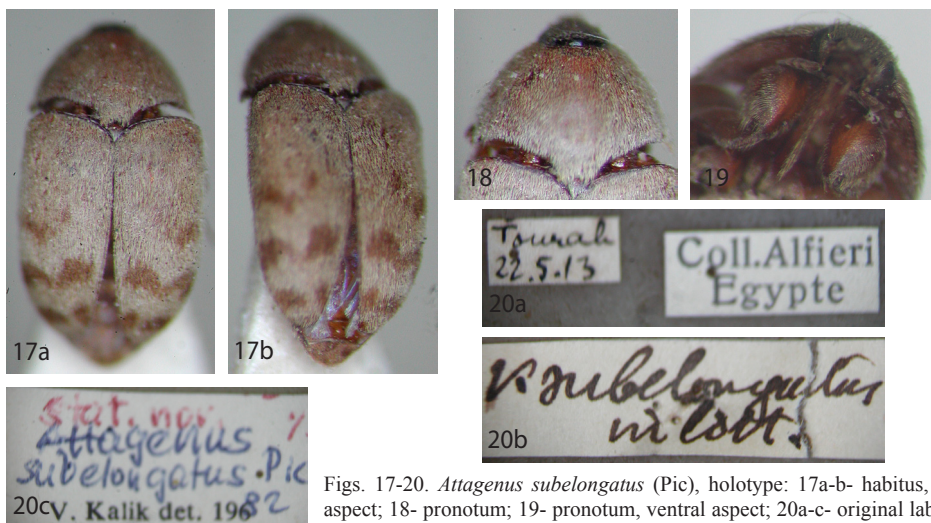
Telopes brunneonotatus var. *subelongatus* Pic, 1929a: 9.

Type material. Holotype (♀): „Tourah, 22.5.13“ / „Coll. Alfieri, Egypte“ / „v subelongatus“ / „stat. nov. *Attagenus subelongatus* Pic, V. Kalik det.82“, (MNHN).

Additional material: Israel, Nizzanim, 14.vi.2012, on light trap, L. Friedman leg., 1 ♂, J. Háva det., (JHAC).

Remarks. According to study of type specimen I remove the species from synonymy with *Attagenus posticalis* Fairmaire, 1879 and newly stated it as independent species. The species is very similar to *A. assuanensis* (Pic, 1899) and *A. attenuatus* (Pic, 1894) but differs from them by the structure of female antennae, long narrow prosternal process and colour patterns on elytra.

Distribution. Species known from Egypt and Israel.



Figs. 17-20. *Attagenus subelongatus* (Pic), holotype: 17a-b- habitus, dorsal aspect; 18- pronotum; 19- pronotum, ventral aspect; 20a-c- original labels.

Genus *Hemirhopalum* Sharp, 1902

Hemirhopalum testaceipes Pic, 1936

(Figs. 21-27)

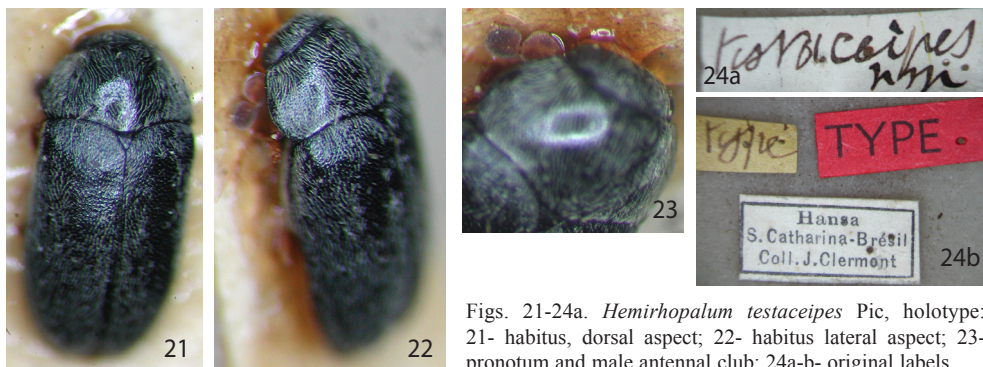
Hemirhopalum testaceipes Pic, 1936a: 2.

Hemirhopalum elongatum Pic, 1942: 8 syn. nov.

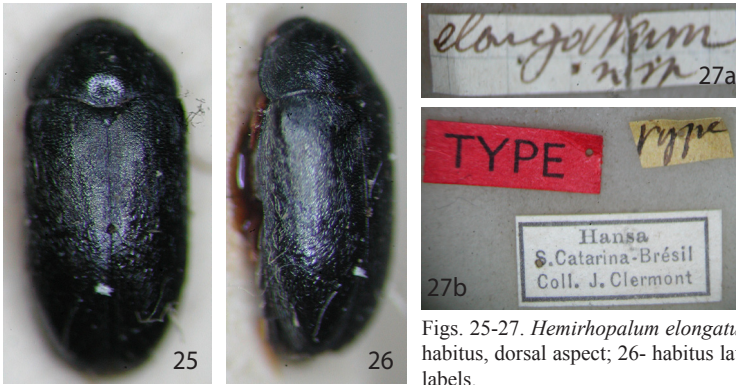
Type material. *Hemirhopalum testaceipes*: Holotype (♂): „Hansa, S Catharina-Brésil, Coll. J.Clermont“ / „TYPE“ / „Type“ / „testaceipes n sp“, (MNHN).

Hemirhopalum elongatum: Holotype (♀): „Hansa, S Catharina-Brésil, Coll. J.Clermont“ / „TYPE“ / „Type“ / „elongatum n sp“, (MNHN).

Remarks. The species *H. elongatum* described by Pic according to female specimen from the same locality as male of *H. testaceipes*. *H. elongatum* is female for the *H. testaceipes* and it is a new junior synonym of *H. testaceipes*.



Figs. 21-24a. *Hemirhopalum testaceipes* Pic, holotype: 21- habitus, dorsal aspect; 22- habitus lateral aspect; 23- pronotum and male antennal club; 24a-b- original labels.



Figs. 25-27. *Hemirhopalum elongatum* Pic, holotype: 25- habitus, dorsal aspect; 26- habitus lateral aspect; 27a-b- original labels.

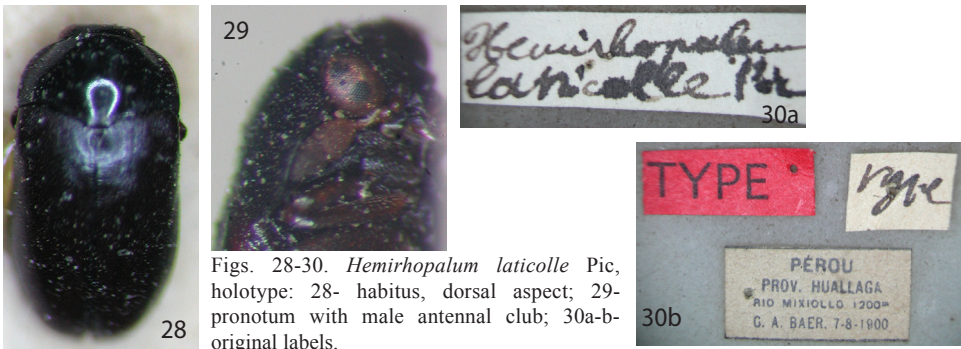
Distribution. Species known from Brazil.

***Hemirhopalum longipenne* Pic, 1916**
(Figs. 28-32)

Hemirhopalum longipenne Pic, 1916a: 17.
Hemirhopalum laticolle Pic, 1927a: 186 **syn. nov.**

Type material. *Hemirhopalum laticolle*: Holotype (♂): „Pérou, Prov. Huallaga, Rio Mixiollo, 1200 m, G. A. Baer., 7-8-1900“ / „TYPE“ / „Type“ / „Hemirhopalum laticolle Pic“, (MNHN).
Hemirhopalum laticolle: Holotype (♀): „Pérou, Prov. Huallaga, Rio Mixiollo, 1200 m, G. A. Baer., 7-8-1900“ / „TYPE“ / „Type“ / „Hemirhopalum probabl“ / „H. longipenne Pic“, (MNHN).

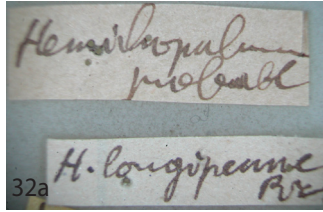
Additional material: „Bolivia“, 2 ♂♂, J. Háva det., (JHAC).



Figs. 28-30. *Hemirhopalum laticolle* Pic, holotype: 28- habitus, dorsal aspect; 29- pronotum with male antennal club; 30a-b- original labels.

Remarks. The species *H. longipenne* described by Pic according to female specimen from the same locality as male of *H. laticolle*. *H. laticolle* is male for the *H. longipenne* and it is a new junior synonym of *H. longipenne*.

Distribution. Species known from Bolivia, Brazil and Peru.



Figs. 31-32. *Hemirhopalum longipenne* Pic, holotype: 31- habitus, dorsal aspect; 32a-b- original labels.

Genus *Cryptorhopalum* Guérin-Ménéville, 1838

Cryptorhopalum baeri Pic, 1916

(Figs. 33-35)

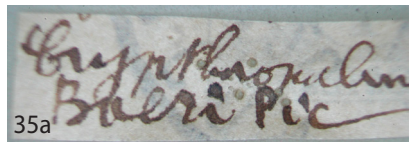
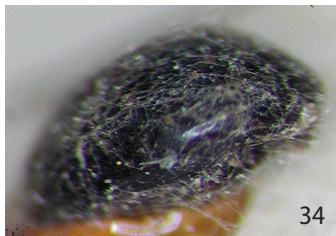
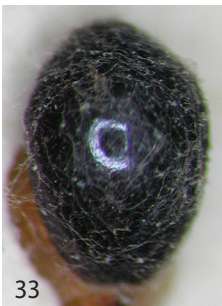
Cryptorhopalum baeri Pic, 1916b: 3.

Type material. 2 syntypes: „Pérou, Prov. Huallaga, Rio Mixiollo, 1200 m, G. A. Baer., 7-8-1900“ / „TYPE“ / „Type“ / „Cryptorhopalum Baeri Pic“, (MNHN). Lectotype here designated.

Additional material: Peru: Loreto, Padre Isla, 28.ix.2006, beatingfoliage, R. Westerduijn leg., 2 spec., J. Háva det., (JHAC).

Remarks. According to study of the 2 syntypes deposited in coll. M. Pic, one syntype is here designated as lectotype belonging to the species *C. baeri* but one specimen belongs to other unidentified species. The second specimen differs by the structure of antennae and colour setation.

Distribution. Species known from Peru.



Figs. 33-35. *Cryptorhopalum baeri* Pic, 1916, lectotype: 33- habitus, dorsal aspect; 34- habitus, lateral aspect; 35a-b- original labels.

***Cryptorhopalum callanganum* Pic, 1927**
(Figs. 36-37)

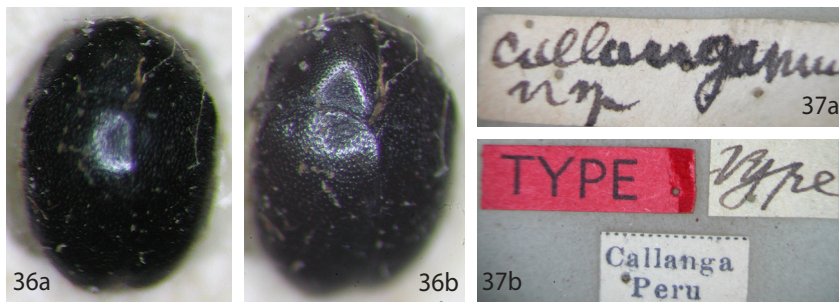
Cryptorhopalum callanganum Pic, 1927b: 5.

Type material. 2 syntypes: „Callanga, Peru“ / „callanganum n sp“ / „TYPE“ / „Type“. 1 syntype designated here as lectotype, 1 as paralectotype.

Additional material: Peru: Madre de Dios, Puerto Maldonado, 2.i.1984, L. Huggert leg., 2 spec., J. Háva det., (JHAC).

Remarks. The species very similar to *C. baeri* Pic, but differs from it by the coarsely punctate elytra on basal third and body form.

Distribution. Species known from Peru.



Figs. 36-37. *Cryptorhopalum callanganum* Pic, 1927, lectotype: 36a-b- habitus, dorsal aspect; 37a-b- original labels.

***Cryptorhopalum corumbanum* Pic, 1923**
(Figs. 38-39)

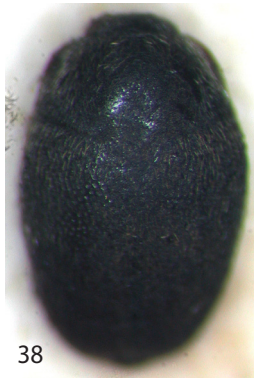
Cryptorhopalum corumbanum Pic, 1923: 3.

Type material. 2 syntypes: „Corumba, Matt. Grosso“ / „corumbanum n sp“ / „TYPE“ / „Type“, (MNHN). 1 syntype designated here as lectotype, 1 as paralectotype.

Additional material: „Cuyaba, Mtt. Grosso“, 1 ♂, J. Háva det., (JHAC).

Remarks. The species belongs to *C. equisolae* species group and similar to *C. rugulosus* Pic, but differs from it by dark brown apical part of elytra, anterior pronotal angles more flat and intermixed black and yellow setae on elytra.

Distribution. Species known from Brazil.



38



Figs. 38-39. *Cryptorhopalum corumbanum* Pic, 1923, lectotype: 38- habitus, dorsal aspect; 39a-b- original labels.

***Cryptorhopalum rugulosum* Pic, 1923**
(Figs. 40-43)

Cryptorhopalum rugulosum Pic, 1923: 3.

Type material. Holotype: „Corumba, Matt. Grosso“ / „rugulosum n sp“ / „TYPE“ / „Type“, (MNHN).

Additional material: „Corumba, Mtt. Grosso“, 5 spec., J. Háva det., (4 MNHN, 1 JHAC).

Remarks. The species belongs to „*C. equisolae* species group“ and similar to *C. corumbanum* Pic, 1923, but differs from it by entirely black elytra and yellowish-brown setation on pronotum.

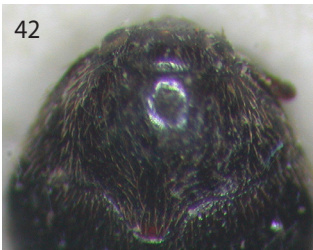
Distribution. Species known from Brazil.



40



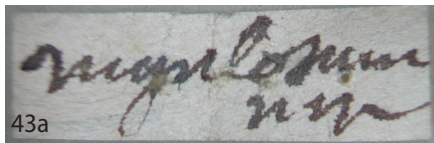
41



42



43b



43a

Figs. 40-43. *Cryptorhopalum rugulosum* Pic, 1923, holotype: 40- habitus, dorsal aspect; 41- habitus, lateral aspect; 42- pronotum; 43a-b- original labels.

Cryptorhopalum curtum (Pic, 1942) comb. nov.
(Figs. 44-47)

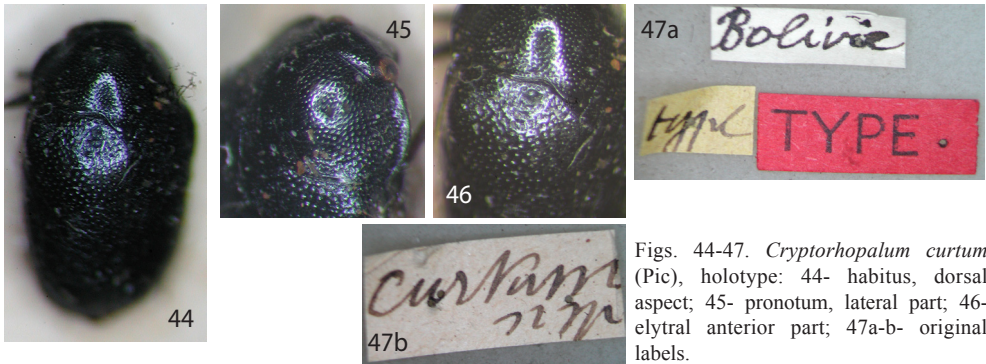
Hemirhopalum curtum Pic, 1942: 8.

Type material. Holotype: „Bolivia“ / „curtum n sp.“ / „TYPE“ / „Type“ / *Cryptorhopalum curtum* (Pic) comb. nov., J. Háva det. 2017, (MNHN).

Additional material: „Peru, Huanuco Dept., Tingo Maria, 10 km W, 1100 m, 13.Oct.1999, R. Brooks, PERU1B99 016, ex. sweeping flowering tree“, 1 spec., J. Háva det., (JHAC); „Brasil, S:ta Catharina, Nova Teutonia, 1.1938, Fr. Plaumann“, 1 ♀, J. Háva det., (JHAC).

Remarks. The species described by Pic (1942) as *Hemirhopalum*, but according to study of type material the species is newly combined to genus *Cryptorhopalum*. The species belongs to „*C. equisolae* species group“. Body length 3.2 mm.

Distribution. Species known from Bolivia, new for Peru and Brazil.



Figs. 44-47. *Cryptorhopalum curtum* (Pic), holotype: 44- habitus, dorsal aspect; 45- pronotum, lateral part; 46- elytral anterior part; 47a-b- original labels.

Cryptorhopalum centromaculatum Reitter, 1881
(Fig. 48)

Cryptorhopalum centromaculatum Reitter, 1881: 53.

Material examined: „Brasilien, Nova Teutonia, Fritz Plaumann“ / „centromaculatum Reitter“ [M. Pic. Det.] / „Derm 2807“, 5 spec., (MNHN).

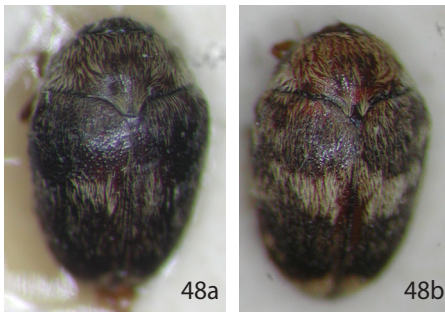


Fig. 48. *Cryptorhopalum centromaculatum* Reitter, 1881: 48a-b- habitus, dorsal aspect.

Remarks. The species is similar to *C. imperiale* Reitter, 1881 but differs from it by the small body length 2.3-2.5 mm (*imperiale* 3.0-3.3 mm) and setation on dorsal surfaces.

Distribution. Species known from Brazil.

***Cryptorhopalum quinquepunctatum* Reitter, 1881**
(Figs. 49-50)

Cryptorhopalum quinquepunctatum Reitter, 1881: 47.

Material examined: „Corumba, Matt Grosso“ / „5-punctatum Reitt“ [M. Pic. Det.], 1 spec., (MNHN).

Distribution. Species known from Brazil.



Figs. 49-50. *Cryptorhopalum quinquepunctatum* Reitter, 1881: 49- habitus, dorsal aspect; 50- pronotum.

***Cryptorhopalum postnotatum* Pic, 1927**
(Figs. 51-54)

Cryptorhopalum postnotatum Pic, 1927b: 5.

Cryptorhopalum postnotatum var. *mediofasciatum* Pic, 1927b: 5.

Type material. *Cryptorhopalum postnotatum*: Holotype: „Corumba, Matt. Grosso“ / „postnotatum n sp“ / „TYPE“ / „Type“, (MNHN).

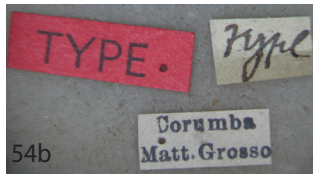
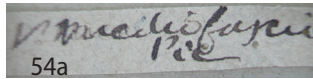
Cryptorhopalum postnotatum var. *mediofasciatum*: Holotype: „Corumba, Matt. Grosso“ / „v mediofasciatum Pic“ / „TYPE“ / „Type“, (MNHN).

Additional material: „Bolivia“, 1 spec., J. Háva det., (JHAC); „Brazil, Chapada, Oct.“, 1 spec., J. Háva det., (JHAC).

Distribution. Species known from Bolivia and Brazil.



Figs. 51-52. *Cryptorhopalum postnotatum* Pic, holotype: 51- habitus, dorsal aspect; 52a-b- original labels.



Figs. 53-54. *Cryptorhopalum postnotatum* var. *mediofasciatum* Pic, holotype: 53- habitus, dorsal aspect; 54a-b- original labels.

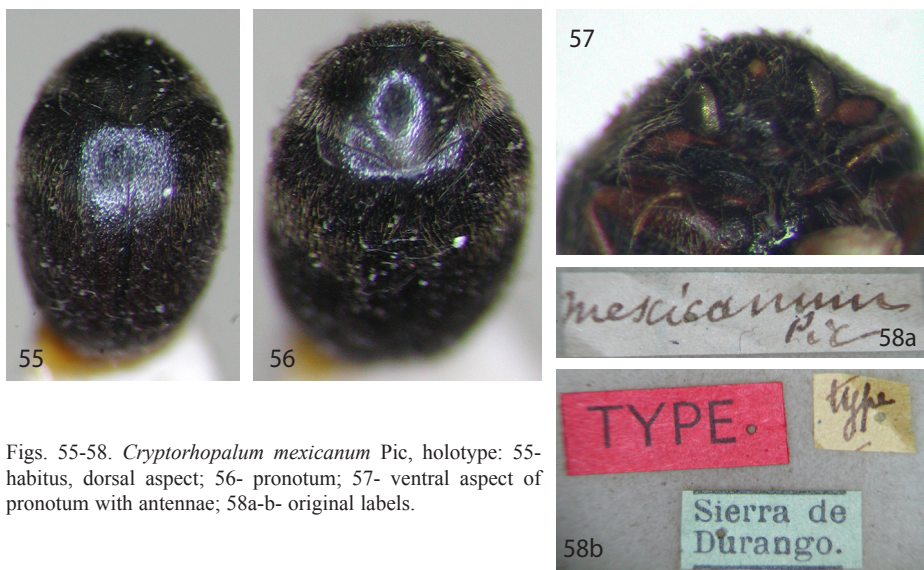
***Cryptorhopalum mexicanum* Pic, 1916**
(Figs. 55-58)

Cryptorhopalum mexicanum Pic, 1916b: 2.

Type material. Holotype (♂): „Sierra de Durango“ / „mexicanum Pic“ / „TYPE“ / „Type“, (MNHN).

Additional material: Mexico, Oaxaca, 12 km N Oaxaca City, hwy175, 1900 m, 22.ix.1990, R. Baranowski leg., 1 ♂, 1 ♀, J. Háva det., (JHAC).

Distribution. Species known from Mexico: Durango, new for Oaxaca.



Figs. 55-58. *Cryptorhopalum mexicanum* Pic, holotype: 55- habitus, dorsal aspect; 56- pronotum; 57- ventral aspect of pronotum with antennae; 58a-b- original labels.

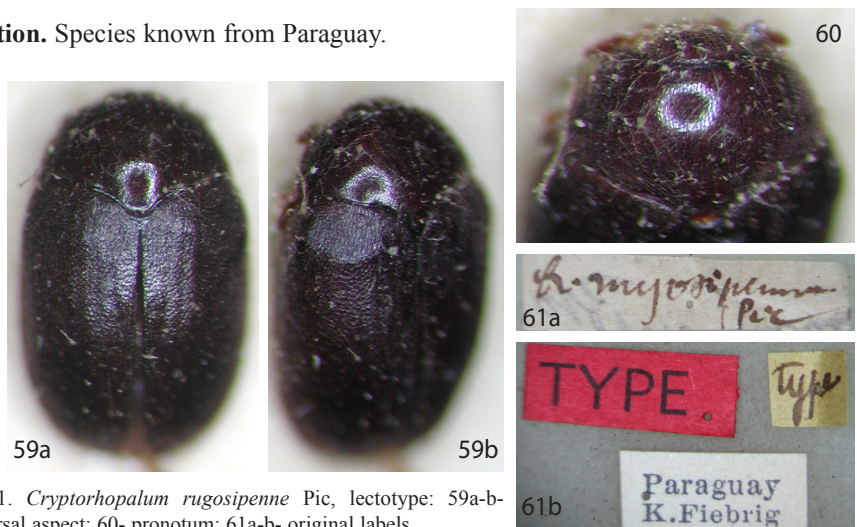
***Cryptorhopalum rugosipenne* Pic, 1916**
(Figs. 59-61)

Cryptorhopalum rugosipenne Pic, 1916b: 2.

Type material: 2 syntypes: „Paraguay, K. Fiebrig“ / „Cr. rugosipenne Pic“ / „TYPE“ / „Type“, (MNHN). 1 syntype designated here as lectotype, 1 as paralectotype.

Remarks. Body length 3.57 mm, maximum width 2.1 mm, dark brown.

Distribution. Species known from Paraguay.



Figs. 59-61. *Cryptorhopalum rugosipenne* Pic, lectotype: 59a-b- habitus, dorsal aspect; 60- pronotum; 61a-b- original labels.

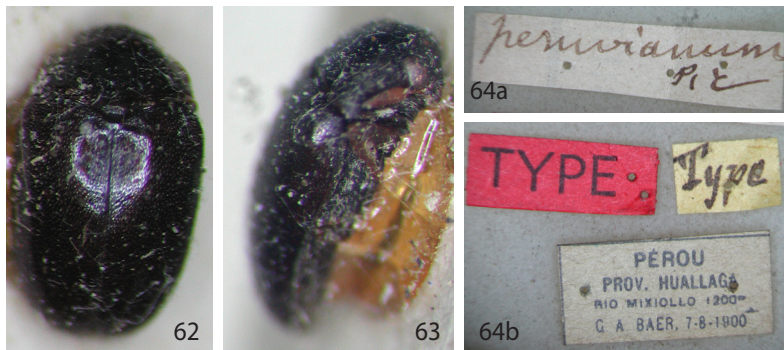
Cryptorhopalum peruvianum Pic, 1916

(Figs. 62-64)

Cryptorhopalum peruvianum Pic, 1916b: 2.

Type material. Holotype (♂): „Pérou, Prov. Huallaga, Rio Mixollo, 1200m, G. A. Baer, 7-8-1900“ / „peruvianum Pic“ / „TYPE“ / „Type“, (MNHN).

Distribution. Species known from Peru.



Figs. 62-64. *Cryptorhopalum peruvianum* Pic, holotype: 62- habitus, dorsal aspect; 63- habitus, antero-lateral aspect; 64a-b- original labels.

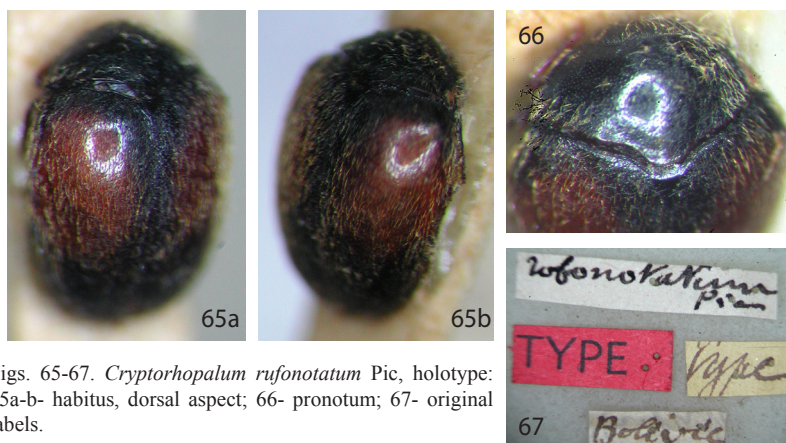
Cryptorhopalum rufonotatum Pic, 1916

(Figs. 65-67)

Cryptorhopalum rufonotatum Pic, 1916a: 17.

Type material. Holotype (♂): „Bolivia“ / „rufonotatum Pic“ / „TYPE“ / „Type“, (MNHN).

Additional material: „Brasilien, Amazonas, Mission Cauaburi am Kanal Maturacá, 24.ii.-4.iii.64“, 1 ♀, J. Háva det., (JHAC).



Figs. 65-67. *Cryptorhopalum rufonotatum* Pic, holotype: 65a-b- habitus, dorsal aspect; 66- pronotum; 67- original labels.

Remarks. Body length 3.1 mm. The species belongs to „*triste* species group“ and species subgroup „*rufofasciatum*“, the subgroup characterized by bicolorous cuticle (elytra black or dark brown with reddish or orange cuticular fascia or spot). The species *C. sharpi* Háva, 2015 is very similar but differs from *rufonotatum* by the more narrow body form, orange cuticular spot (spot reached to anterior part of each elytron).

Distribution. Species known from Bolivia, new for Brazil.

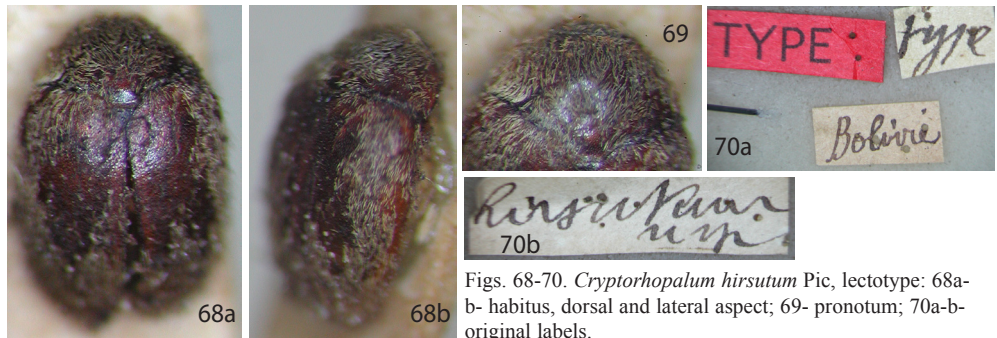
***Cryptorhopalum hirsutum* Pic, 1927**
(Figs. 68-70)

Cryptorhopalum hirsutum Pic, 1927b: 4.

Type material. 2 syntypes: „Bolivia“ / „*hirsutum* n sp“ / „TYPE“ / „Type“, (MNHN). 1 syntype designated here as lectotype, 1 as paralectotype.

Additional material: „Reimoser, Paraguay, San Luis“, 1 ♀, J. Háva det., (JHAC).

Distribution. Species known from Bolivia, new for Paraguay.



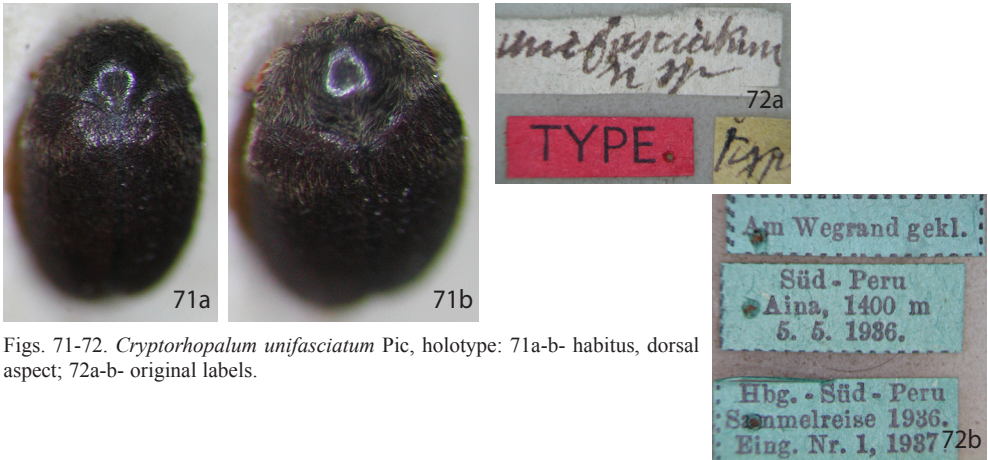
Figs. 68-70. *Cryptorhopalum hirsutum* Pic, lectotype: 68a-b- habitus, dorsal and lateral aspect; 69- pronotum; 70a-b- original labels.

***Cryptorhopalum unifasciatum* Pic, 1954**
(Figs. 71-72)

Cryptorhopalum unifasciatum Pic, 1954: 178.

Type material. Holotype (♂): „Süd Peru, Aina, 1400 m, 5.5.1936“ / „Hbg. Süd-Peru, Sammelreise 1936, Eing. Nr. 1, 1937“ / „Am Wegrand gekl.“ / „*unifasciatum* n sp“ / „TYPE“ / „Type“, (MNHN).

Distribution. Species known from Peru.



Figs. 71-72. *Cryptorhopalum unifasciatum* Pic, holotype: 71a-b- habitus, dorsal aspect; 72a-b- original labels.

***Cryptorhopalum convexum* Pic, 1927**
(Figs. 73-74)

Cryptorhopalum convexum Pic, 1927a: 86.

Type material. Holotype: „Colombie, Ibague, Fr. Claver“ / „convexum n sp“ / „TYPE“ / „Type“, (MNHN).

Remarks. The species belongs to „*triste* species group“ and species subgroup „*rufofasciatum*“. Each elytron with one transverse dark-reddish fascia (Fig. 73c-d).

Distribution. Species known from Colombia.



Figs. 73-74. *Cryptorhopalum convexum* Pic, holotype: 73a-d- habitus, dorsal aspect (marked area = dark red fascia); 74a-b- original labels.

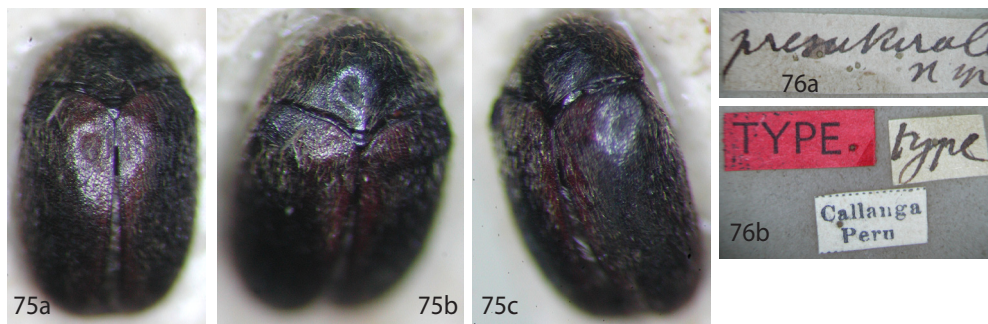
***Cryptorhopalum presuturale* Pic, 1929**

(Figs. 75-76)

Cryptorhopalum presuturale Pic, 1929b: 2.

Type material. Holotype: „Callanga, Peru“ / „presuturale n sp“ / „TYPE“ / „Type“, (MNHN).

Distribution. Species known from Peru.



Figs. 75-76. *Cryptorhopalum presu-turale* Pic, holotype: 75a-c- habitus, dorsal aspect; 76a-b- original labels.

***Cryptorhopalum brunnescente* Pic, 1916**

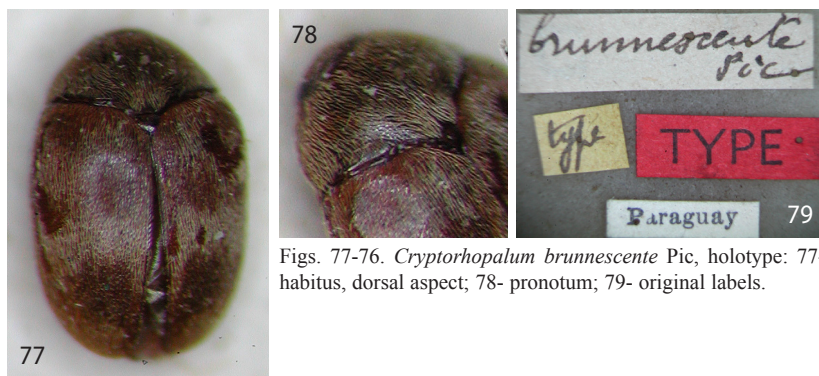
(Figs. 77-79)

Cryptorhopalum brunnescente Pic, 1916a: 17.

Type material. Holotype (♀): „Paraguay“ / „brunnescente Pic“ / „TYPE“ / „Type“, (MNHN).

Additional material: „Paraguay, S. Bernardino, Fiebrig“ / *Cryptorhopalum instabile* Sharp ?, det. V. Kalík 63“, 2 spec., J. Háva det., (NHMW, JHAC); „St. Lucia, v-13.22. Ven.“ / „Coll. by L.R.Reynolds“, 6 spec., J. Háva det., (4 FMHD, 2 JHAC).

Distribution. Species known from Paraguay, new for St. Lucia.



Figs. 77-76. *Cryptorhopalum brunnescente* Pic, holotype: 77- habitus, dorsal aspect; 78- pronotum; 79- original labels.

Cryptorhopalum trifasciatum Pic, 1927

(Figs. 80-82)

Cryptorhopalum trifasciatum Pic, 1927b: 5.

Cryptorhopalum cuespani Herrmann, Háva & Kadej, 2015: 72 **syn. nov.**

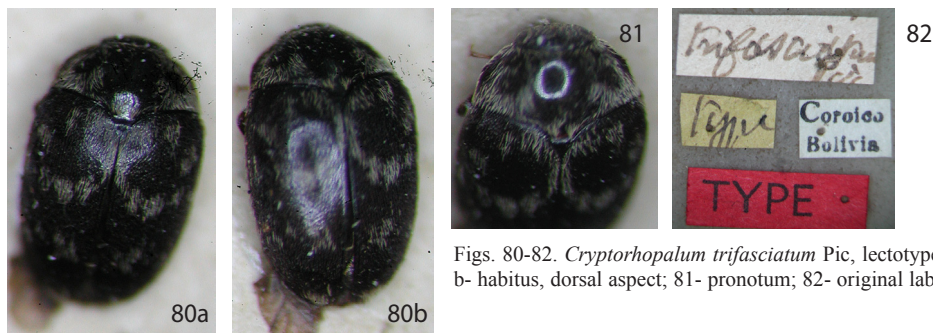
Type material. *Cryptorhopalum trifasciatum*: Holotype (♂): „Coroico, Bolivia“ / „trifasciatum Pic“ / „TYPE“ / „Type“, (MNHN).

Cryptorhopalum cuespani: Holotype (♂): “PERU, region Huanuco, 40 km NE of Tingo Maria, Abra Divisoria, road to Rio Azul village, 9°12’S-75°49’W, 1600m, 11.IV.2013 R.Constantin & L.Huaman Cuespán”, (MUSM).

Additional material: „Bolivia, Coroico, Huarinillas, 1100 m, Feb. 1949, G. Kuschel“, 2 ♂♂, J. Háva det., (JHAC); „Mojos, Boliv“ / „N. Holmgren“, 1 ♂, 2 ♀♀, J. Háva det., (2 NHRS, 1 JHAC); „Peru, Huanuco Dept., Tingo Maria, 10 km W, 1100 m, 13.Oct.1999, R. Brooks, PERU1B99 016, ex. sweeping flowering tree“, 8 spec., J. Háva det., (6 KUNM, 2 JHAC).

Remarks. Herrmann et al. (2015) described species *C. cuespani* from Peru, but all morphological characters is identical with *C. trifasciatum*. *C. cuespani* is new junior synonym of *C. trifasciatum*.

Distribution. Species known from Bolivia and Peru.



Figs. 80-82. *Cryptorhopalum trifasciatum* Pic, lectotype: 80a-b- habitus, dorsal aspect; 81- pronotum; 82- original labels.

Cryptorhopalum rusticolle Pic, 1927

(Figs. 83-88)

Cryptorhopalum rusticolle Pic, 1927b: 5.

Cryptorhopalum rufobrunneum Pic, 1942: 8 **syn. nov.**

Cryptorhopalum quadrisignatum Pic, 1942: 9 **syn. nov.**

Cryptorhopalum grandjeani Pic, 1942: 9 **syn. nov.**

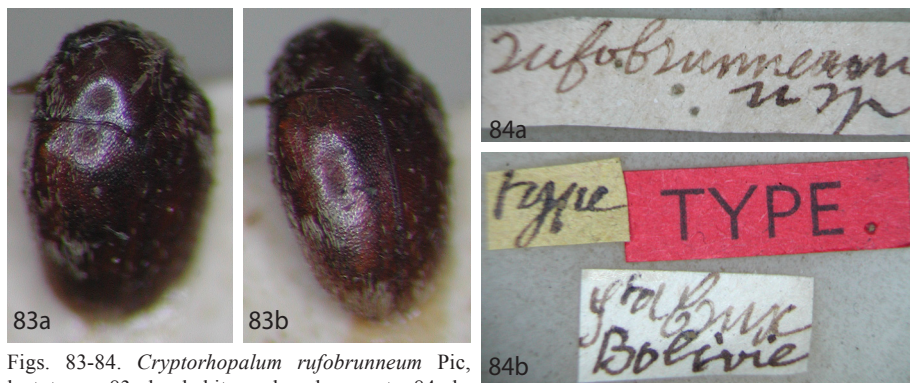
Type material. *Cryptorhopalum rusticolle*: Holotype (♂): „Callanga, Peru“ / „rusticolle n sp“ / „Type“, (MNHN).

Cryptorhopalum rufobrunneum: 2 syntypes: „Sta. Cruz, Bolivia“ / „rufobrunneum n sp“ / „TYPE“ / „Type“, (MNHN). 1 syntype designated here as lectotype, 1 as paralectotype (both on one pin).

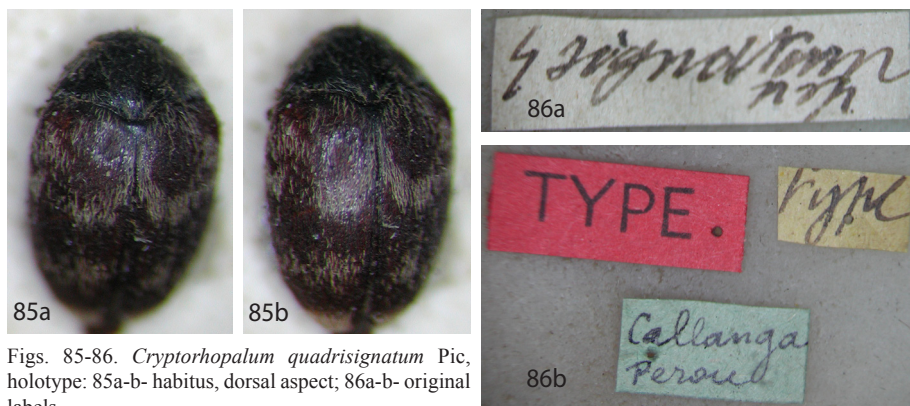
Cryptorhopalum quadrisignatum: Holotype (♀): „Callanga, Perou“ / „4 signatum n sp“ / „TYPE“ / „Type“, (MNHN).

Cryptorhopalum grandjeani: Holotype (♀): „Callanga, Perou“ / „grandjeani n sp“ / „TYPE“ / „Type“, (MNHN).

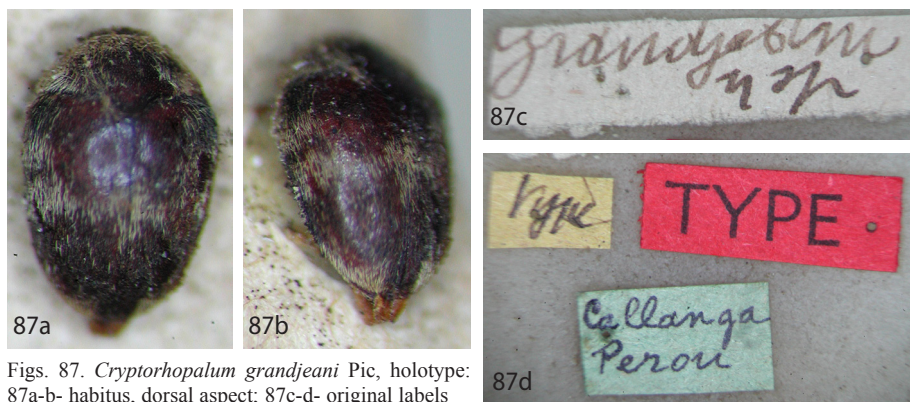
Additional material: „Callanga, Perou“, 1 ♀, J. Háva det. [as *quadrisignatum*], (JHAC); „Peru, Quincemil, 700 m, 3 Feb 1949“, 1 ♂, J. Háva det. [as *grandjeani*], (JHAC); „Peru, Junin, Satipo, Paratuchali, 22.i.1984, leg. L. Huggert“, 1 ♂, J. Háva det. [as *rufobrunneum*], (JHAC).



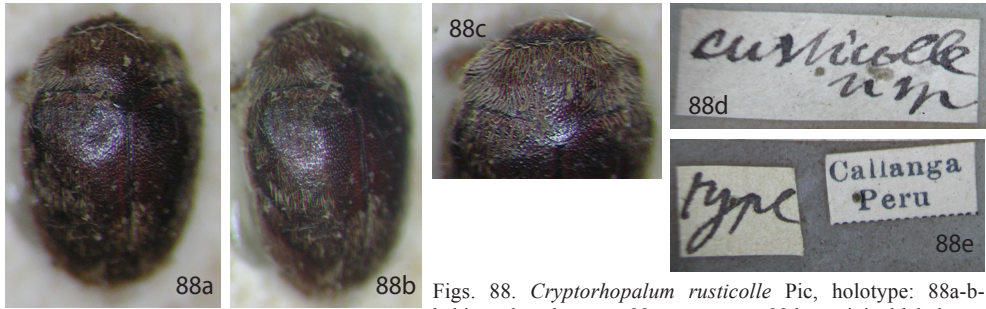
Figs. 83-84. *Cryptorhopalum rufobrunneum* Pic, lectotype: 83a-b- habitus, dorsal aspect; 84a-b- original labels.



Figs. 85-86. *Cryptorhopalum quadrisignatum* Pic, holotype: 85a-b- habitus, dorsal aspect; 86a-b- original labels.



Figs. 87. *Cryptorhopalum grandjeani* Pic, holotype: 87a-b- habitus, dorsal aspect; 87c-d- original labels



Figs. 88. *Cryptorhopalum rusticolle* Pic, holotype: 88a-b- habitus, dorsal aspect; 88c- pronotum; 88d-e- original labels.

Remarks. The study of type material of the four species *rusticolle*, *rufobrunneum*, *grandjeani* and *quadrisignatum* has shown that it is one species, all morphological characters are identical (antennae are identical; elytral setation is slightly variable), the species *C. rufobrunneus*, *C. quadrisignatum* and *C. grandjeani* is new junior synonyms for *C. rusticolle*.

Distribution. Species known from Bolivia and Peru.

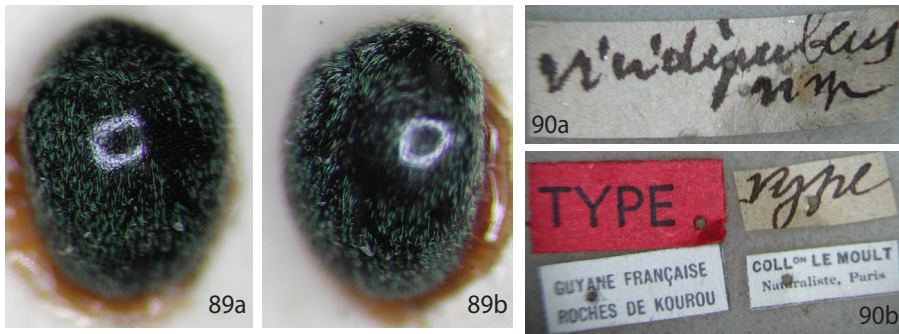
Cryptorhopalum viridipubens Pic, 1923

(Figs. 89-90)

Cryptorhopalum viridipubens Pic, 1923: 3.

Type material. Holotype (♂): „Guyane Francaise, Roches de Kourou“ / „Coll on Le Moul, Naturaliste, Paris“ / „viridipubens n sp“ / „TYPE“ / „Type“, (MNHN).

Distribution. Species known from French Guiana.



Figs. 89-90. *Cryptorhopalum viridipubens* Pic, holotype: 89a-b- habitus, dorsal aspect; 90a-b- original labels.

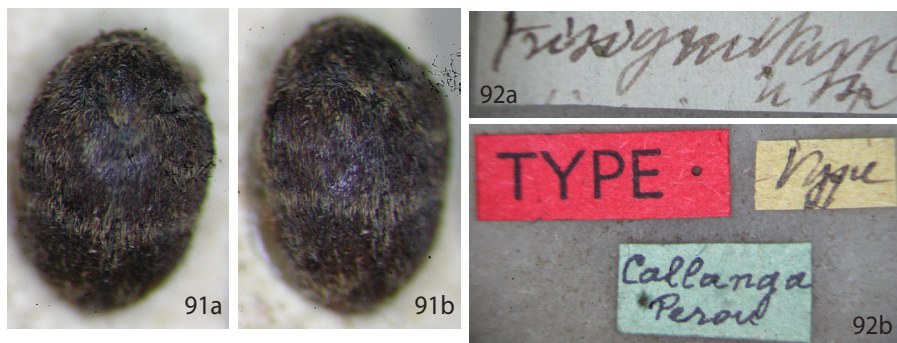
***Cryptorhopalum trisignatum* Pic, 1942**

(Figs. 91-92)

Cryptorhopalum trisignatum Pic, 1942: 9.

Type material. Holotype: „Callanga, Perou“ / „trisignatum n sp“ / „TYPE“ / „Type“, (MNHN).

Distribution. Species known from Peru.



Figs. 91-92. *Cryptorhopalum trisignatum* Pic, holotype: 91a-b- habitus, dorsal aspect; 92a-b- original labels.

***Cryptorhopalum claveri* Pic, 1916**

(Figs. 93-94)

Cryptorhopalum claveri Pic, 1916b: 2.

Type material. Holotype (♂): „Colombia“ / „Claveri Pic“ / „TYPE“ / „Type“, (MNHN).

Additional material: „Colom. [bia], Valle Pichinde, vii.18.1970, 5,000', J.M. Campnell", 1 ♂, J. Háva det., (JHAC).

Distribution. Species known from Colombia.



Figs. 93-94. *Cryptorhopalum claveri* Pic, holotype: 93- habitus, dorsal aspect; 94a-b- original labels.

Cryptorhopalum submetallicum Pic, 1936

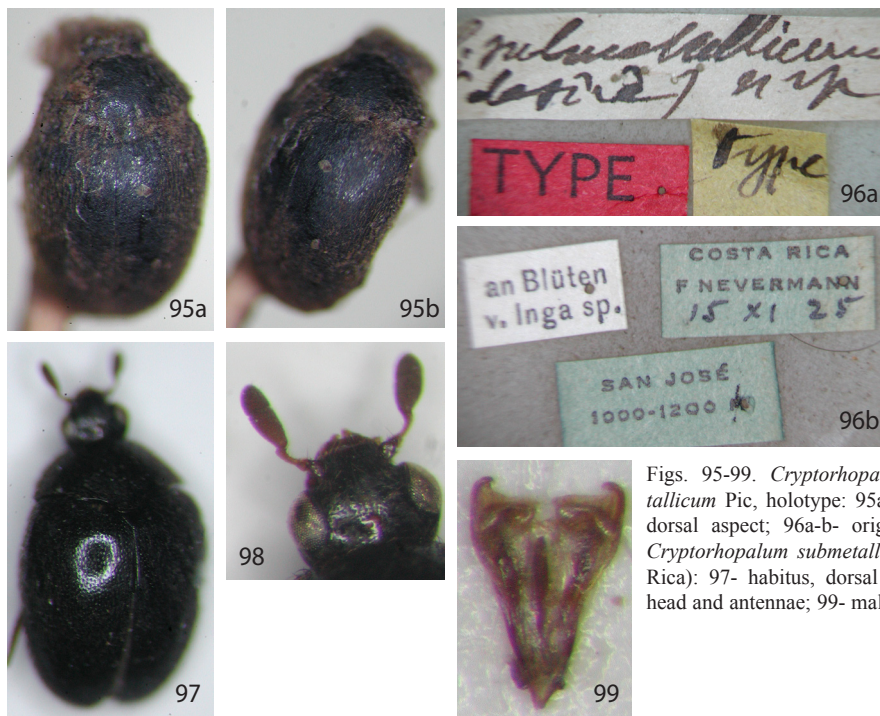
(Figs. 95-99)

Cryptorhopalum submetallicum Pic, 1936b: 194.

Type material. Holotype: „Costa Rica, F. Nevermann, 15.xi.25“ / „San José, 1000-1200 m“ / an Blüten, v.Inga sp.“ / „C submetallicum, désiré n sp“ / „TYPE“ / „Type“, (MNHN).

Additional material: „Costa Rica, San José, vi.22.1930, leg. F. Nevermann“, 1 ♂, J. Háva det., (JHAC); „Costa Rica, Punt. 6 km S. Santa Elena, 1100m, 30.v.1979, H & A Howden“ / „on flowers Croton sp.“, 1 ♂, 1 ♀, J. Háva det., (JHAC).

Distribution. Species known from Costa Rica.



Figs. 95-99. *Cryptorhopalum submetallicum* Pic, holotype: 95a-b- habitus, dorsal aspect; 96a-b- original labels; *Cryptorhopalum submetallicum* (Costa Rica): 97- habitus, dorsal aspect; 98- head and antennae; 99- male genitalia.

Cryptorhopalum rufum Pic, 1942

(Figs. 100-101)

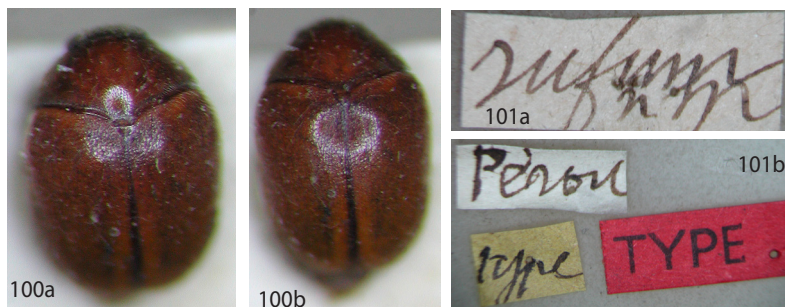
Cryptorhopalum rufum Pic, 1942: 8.

Type material. Holotype: „Pérou“ / „rufum n sp“ / „TYPE“ / „Type“, (MNHN).

Additional material: „Costa Rica, La Selva, 40m, 17-23.v.1988, B.V.Brown, primary rainforest, malaise“, 1 spec., J. Háva det., (JHAC).

Remarks. The species very similar to *C. globuloide* Sharp, but differs from it by the light brown part of elytral suture.

Distribution. Species known from Peru, new for Costa Rica.



Figs. 100-101. *Cryptorhopalum rufum* Pic, holotype: 100a-b- habitus, dorsal aspect; 101a-b- original labels.

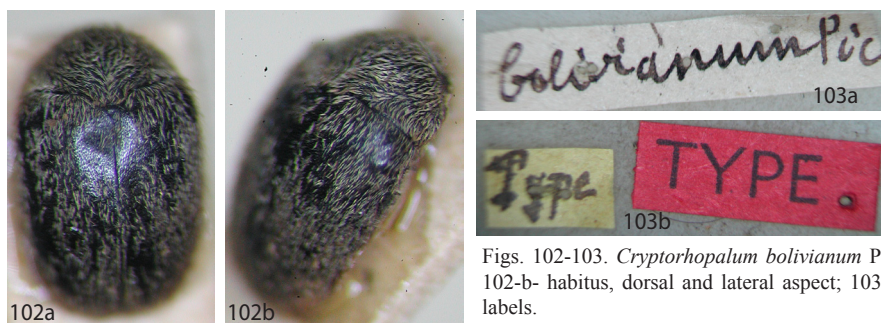
***Cryptorhopalum bolivianum* Pic, 1916**
(Figs. 102-105)

Cryptorhopalum bolivianum Pic, 1916b: 3.

Type material. Holotype (♀): „Bolivia“ / „bolivianum Pic“ / „TYPE“ / „Type“, (MNHN).

Additional material: „Boliv. Mojoa“, 6 spec., J. Háva det., (5 NHRS, 1 JHAC); „Bolivia“, 1 ♂, 1 ♀, J. Háva det., (JHAC); „Chapada, Brazil, Acc. No.2966“ / „Oct.“, 1 ♂, J. Háva det., (JHAC); „Paraguay, San Luis, Reimoser“ / „Cryptorhopalum rufipenne Pic ?, det. V. Kalík 63“, 3 spec., J. Háva det., (2 NHMW, 1 JHAC).

Distribution. Species known from Bolivia, new for Brazil and Paragay.



Figs. 102-103. *Cryptorhopalum bolivianum* Pic, holotype: 102-b- habitus, dorsal and lateral aspect; 103a-b- original labels.

***Cryptorhopalum gounellei* Pic, 1916**
(Figs. 104-105)

Cryptorhopalum gounellei Pic, 1916b: 3.

Type material. Holotype (♂): „Brésil (Gounelle)“ / „Gounellei Pic“ / „TYPE“ / „Type“, (MNHN).

Additional material: „Brazil, Ceara, 8.84“, 3 spec., J. Háva det., (MNHN); “Peru, Madre de Dios, CIRCA Field

Station, 250-295 m, 10.vii.2010, Chaboo, Bennett, Shin ex. UV light, PER 10-07-UV-4", 1 spec., J. Háva det., (KUNM); „Peru, Huanuco Dept., Tingo Maria, 10 km W, 1100 m, 13.Oct.1999, R. Brooks, PERU1B99 016, ex. sweeping flowering tree“, 1 spec., J. Háva det., (JHAC).

Remarks. The species similar to *C. bolivianum* Pic and *C. laticolle* Pic but differs from them by the more circular body form (in *bolivianum* and *laticolle* body form oval).

Distribution. Species known from Brazil, new for Peru.



Figs. 104-105. *Cryptorhopalum gounellei* Pic, holotype: 104a-b- habitus, dorsal aspect; 105a-b- original labels.

***Cryptorhopalum rufipenne* Pic, 1916**
(Figs. 106-107)

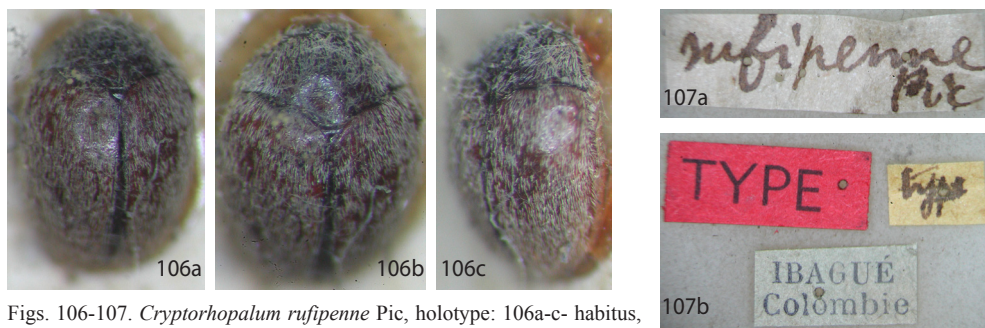
Cryptorhopalum rufipenne Pic, 1916b: 4.

Type material. Holotype: „Ibagué, Colombie“ / „rufipenne Pic“ / „TYPE“ / „Type“, (MNHN).

Additional material: „Colombie“, 15 spec., J. Háva det., (14 MNHN, 1 JHAC); „Panama, Colon prov., 130m, Sherman Forest Reserve, 79°58' W 9°17' N, 6.6-10.7.2002, Čížek & Hauck leg.“, 3 ♂♂, 1 ♀, J. Háva det., (JHAC).

Remarks. The species is very similar to *C. pilosum* Kirsch, 1870 but differs from it by the small body form (2.2-2.3 mm) and very small terminal antennomere (in *pilosum* terminal antennomere large, body 2.6-3.3 mm).

Distribution. Species known from Colombia, new for Panama.



Figs. 106-107. *Cryptorhopalum rufipenne* Pic, holotype: 106a-c- habitus, dorsal aspect; 107a-b- original labels.

***Cryptorhopalum uniforme* Pic, 1927**
(Figs. 108-109)

Cryptorhopalum uniforme Pic, 1927b: 4.

Type material. Holotype: „Corumba, Matt.Grosso“ / „*Cryptorhopalum uniforme* n sp“ / „TYPE“ / „Type“, (MNHN).

Additional material: „Corumba, Matt.Grosso“, 4 spec., J. Háva det., (3 MNHN, 1 JHAC).

Distribution. Species known from Brazil.



Figs. 108-109. *Cryptorhopalum uniforme* Pic, holotype: 108a-b- habitus, dorsal aspect; 108c- habitus, lateral aspect; 109a-b- original labels.

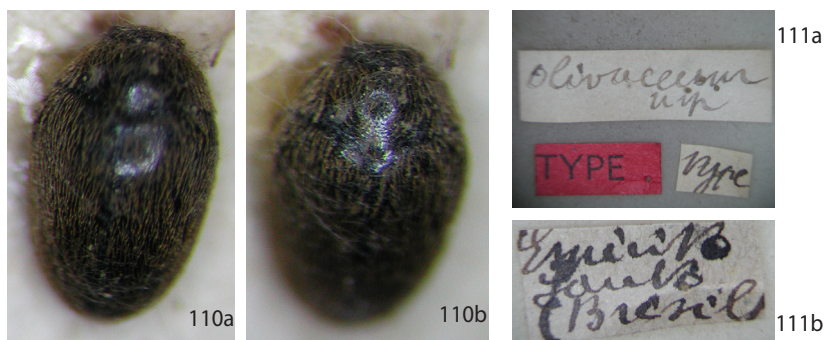
***Cryptorhopalum olivaceum* Pic, 1927**
(Figs. 110-111)

Cryptorhopalum olivaceum Pic, 1927b: 4.

Type material. Holotype (♀): „Espírito Santo (Brasil)“ / „*olivaceum* n sp“ / „TYPE“ / „Type“, (MNHN).

Additional material: „Brasil“, 1 spec., J. Háva det., (MNHN).

Distribution. Species known from Brazil.



Figs. 110-111. *Cryptorhopalum olivaceum* Pic, holotype: 110a-b- habitus, dorsal aspect; 111a-b- original labels.

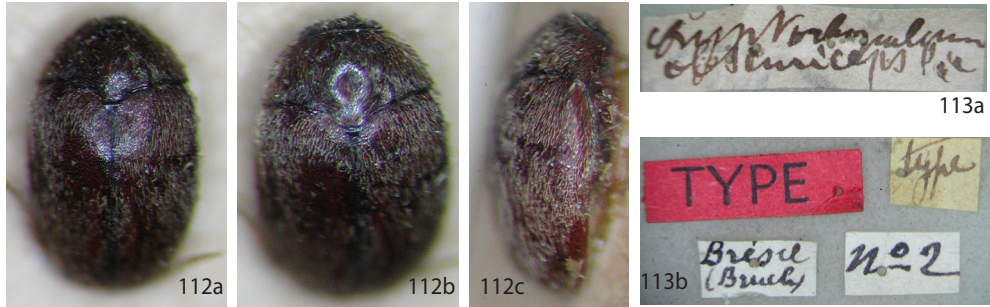
***Cryptorhopalum obscuriceps* Pic, 1916**
(Figs. 112-113)

Cryptorhopalum obscuriceps Pic, 1916b: 3.

Type material. Holotype (♂): „Brésil (Bruch)“ / „n° 2“ / „Cryptorhopalum obscuriceps Pic“ / „TYPE“ / „Type“, (MNHN).

Additional material: „[Brazil] Corumba, Matt.Grosso“, 1 spec., J. Háva det., (JHAC).

Distribution. Species known from Brazil.



Figs. 112-113. *Cryptorhopalum obscuriceps* Pic, holotype: 112a-b- habitus, dorsal aspect; 112c- habitus, lateral aspect; 113a-b- original labels.

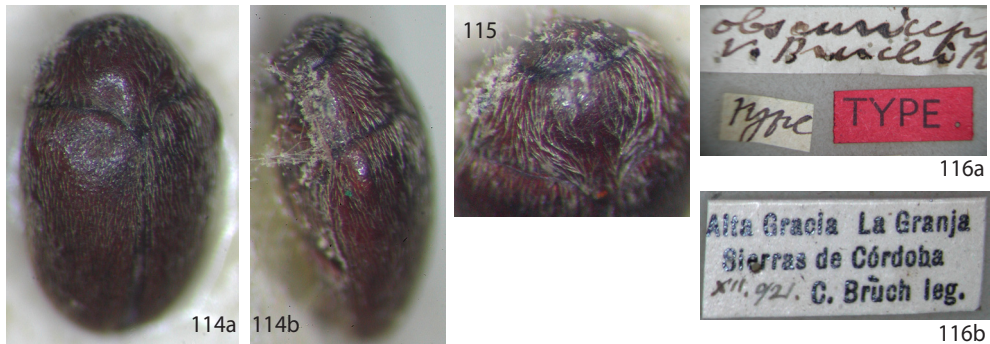
***Cryptorhopalum bruchi* Pic, 1928**
(Figs. 114-116)

Cryptorhopalum obscuriceps var. *Bruchi* Pic, 1928: 49.

Cryptorhopalum bruchi: Háva, 2015a: 161.

Type material. Holotype: „Alta Gracia, La Granja, Sierras de Córdoba, xii.921. C. Bruch leg.“ / „obscuriceps v.Bruchi Pic“ / „TYPE“ / „Type“, (MNHN).

Distribution. Species known from Argentina.



Figs. 114-116. *Cryptorhopalum bruchi* Pic, holotype: 114a-c- habitus, dorsal aspect; 115- pronotum; 116a-b- original labels.

Cryptorhopalum laticolle Pic, 1927

(Figs. 117-120)

Cryptorhopalum laticolle Pic, 1927b: 4.

Cryptorhopalum vagesignatum Pic, 1942: 8 **syn. nov.**

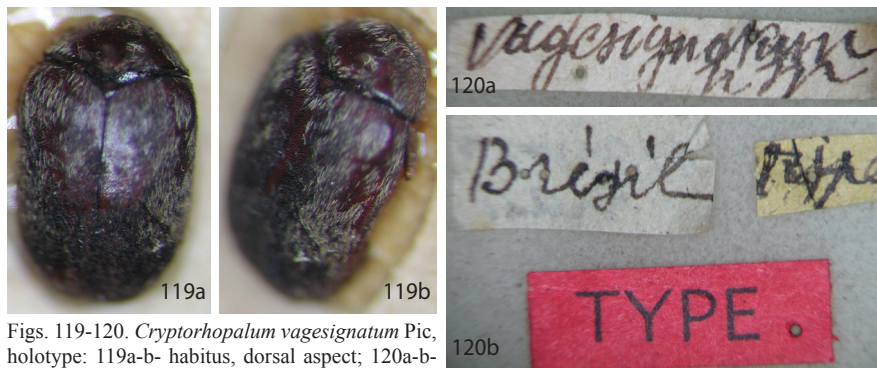
Type material. *Cryptorhopalum laticolle*: Holotype (♂): „Brésil (ex Bruch)“ / n° 1“ / „laticolle n sp“ / „TYPE“ / „Type“, (MNHN).

Cryptorhopalum vagesignatum: Holotype (♀): „Brésil“ / „vagesignatum n sp“ / „TYPE“ / „Type“, (MNHN).

Additional material: „S:ta Catharina, Nova Teutonia, Brasil, 8.1914, Fr. Plaumann“, 2 ♀♀, J. Háva det. [as *vagesignatum*], (1 NHRS, 1 JHAC).



Figs. 117-118. *Cryptorhopalum laticolle* Pic, holotype: 117a-b- habitus, dorsal aspect; 118a-b- original labels.



Figs. 119-120. *Cryptorhopalum vagesignatum* Pic, holotype: 119a-b- habitus, dorsal aspect; 120a-b- original labels.

Remarks. The species *C. vagesignatum* was described by Pic according to female specimen from Brazil and *C. laticolle* according to male specimen from Brazil. Other morphological characters is identical. *C. vagesignatum* is a new junior synonym for *C. laticolle*. The species is very similar to *C. bolivianum* Pic, but differs from it by the brown antennae and long terminal antennomere (in *bolivianum* antennae dark brown and terminal antennomere short).

Distribution. Species known from Brazil.

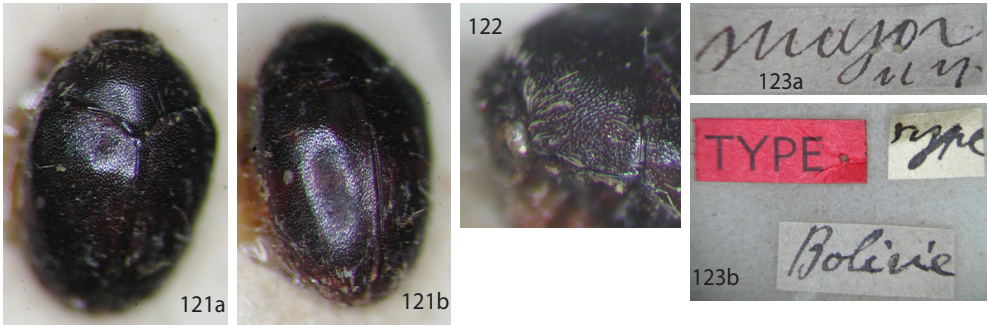
***Cryptorhopalum major* Pic, 1927**
(Figs. 121-123)

Cryptorhopalum major Pic, 1927b: 4.

Type material. Holotype (♀): „Bolivie“ / „major n sp“ / „TYPE“ / „Type“, (MNHN).

Remarks. The species is very similar to *C. rufobrunneum* Pic but differs from it by the coarsely punctured pronotum and anterior part of elytra (in *rufobrunneum*, the pronotal disc is finely punctured).

Distribution. Species known from Bolivia.



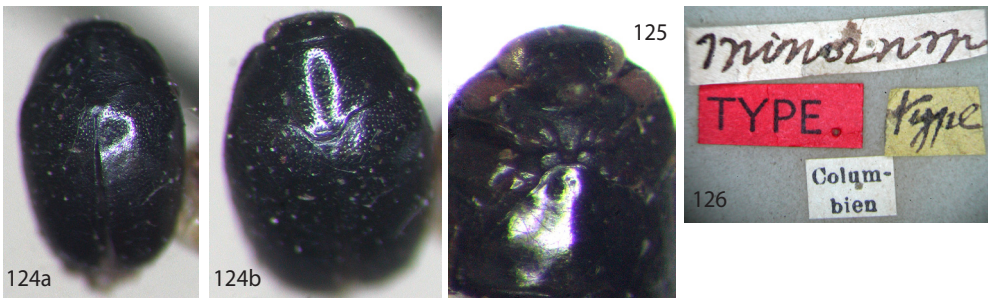
Figs. 121-123. *Cryptorhopalum major* Pic, holotype: 121a-b- habitus, dorsal aspect; 122- pronotum, lateral aspect; 123a-b- original labels.

***Cryptorhopalum minor* Pic, 1942**
(Figs. 124-126)

Cryptorhopalum minor Pic, 1942: 9.

Type material. 2 syntypes: „Colum-bien“ / „minor n sp“ / „TYPE“ / „Type“, (MNHN). 1 syntype designated here as lectotype, 1 as paralectotype.

Additional material: „Colombie.“, 1 ♂, J. Háva det., (JHAC).



Figs. 124-126. *Cryptorhopalum minor* Pic, lectotype: 124a-b- habitus, dorsal aspect; 125- meso-metasternum, ventral aspect; 126- original labels.

Remarks. The species is very small 1.7 mm, and differs from other similar species by the very shine and very finely punctate metasternum (Fig. 125).

Distribution. Species known from Colombia.

***Cryptorhopalum biolleyi* Pic, 1916**
(Figs. 127-128)

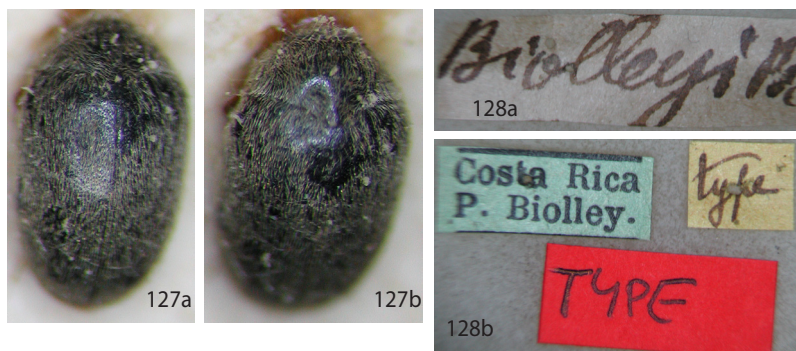
Cryptorhopalum biolleyi Pic, 1916b: 3.

Type material. Holotype (♀): „Costa Rica, P. Biolley.“ / „Biolleyi Pic“ / „TYPE“ / „Type“, (MNHN).

Additional material: „Costa Rica, P. Biolley“, 5 spec., J. Háva det., (MNHN); „Cost Rica, San Jose, 27.vi.1925, coll. Schidt“, 1 ♂, J. Háva det., (JHAC).

Remarks. The species very similar to *C. bolivianum* Pic, but differs from it by the structure of antennae and narrower body form.

Distribution. Species known from Costa Rica.



Figs. 127-128. *Cryptorhopalum biolleyi* Pic, holotype: 127a-b- habitus, dorsal aspect; 128a-b- original labels.

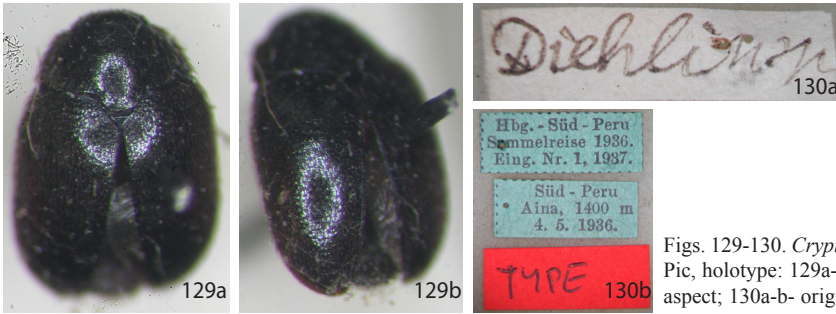
***Cryptorhopalum diehli* Pic, 1954**
(Figs. 129-130)

Cryptorhopalum diehli Pic, 1954: 177.

Type material. Holotype (♂): „Süd Peru, Aina, 1400 m, 4.5.1936“ / „Hbg. Süd-Peru, Sammelreise 1936, Eing. Nr. 1, 1937“ / „Diehli n sp“ / „TYPE“ / „Type“, (MNHN).

Additional material: „Bolivia, Rio Beni, La Paz-Reyes, Balzan 1891“, 1 spec., J. Háva det., (JHAC).

Distribution. Species known from Peru, new for Bolivia.



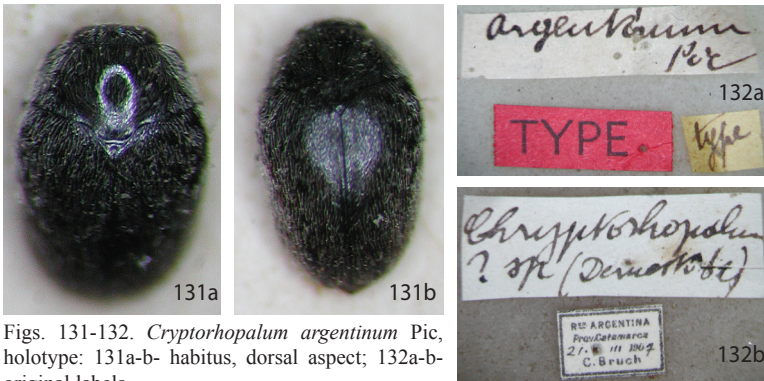
Figs. 129-130. *Cryptorhopalum diehli* Pic, holotype: 129a-b- habitus, dorsal aspect; 130a-b- original labels.

***Cryptorhopalum argentinum* Pic, 1916**
(Figs. 131-132)

Cryptorhopalum argentinum Pic, 1916b: 3.

Type material. Holotype: „Re. Argentina, Prov. Catamarca, 21.iii.1907, C. Bruch“ / „Cryptorhopalum, ? sp (Dermestid)“ / „argentinum Pic“ / „TYPE“ / „Type“, (MNHN).

Distribution. Species known from Argentina.



Figs. 131-132. *Cryptorhopalum argentinum* Pic, holotype: 131a-b- habitus, dorsal aspect; 132a-b- original labels.

***Cryptorhopalum infasciatum* Pic, 1942**
(Figs. 133-135)

Cryptorhopalum infasciatum Pic, 1942: 10.

Type material. Holotype: „Pérou“ / „infasciatum n sp“ / „TYPE“ / „Type“, (MNHN).

Distribution. Species known from Peru.



Figs. 133-135. *Cryptorhopalum infasciatum* Pic, holotype: 133a-b- habitus, dorsal aspect; 134- pronotum; 135a- original labels.

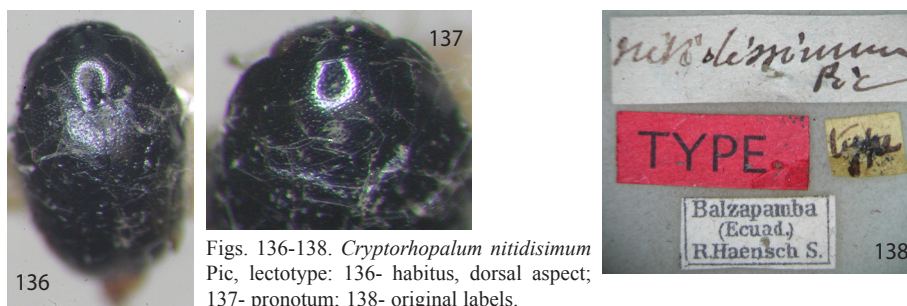
***Cryptorhopalum nitidissimum* Pic, 1916**
(Figs. 136-138)

Cryptorhopalum nitidissimum Pic, 1916b: 3.

Type material. 2 syntypes: „Balzapamba (Ecuad.) R. Haensch S^{cc} / „nitidissimum Pic“ / „TYPE“ / „Type“, (MNHN). 1 syntype (♂) designated here as lectotype, 1 as paralectotype.

Additional material: „Ecuador: Napo, Sacha, 7.iii.1983, leg. L. Huggert“, 1 ♂, J. Háva det., (JHAC); „Ecuador, Loreto, 16.2.-15.3.96, Strnad lgt.“, 1 ♀, J. Háva det., (JHAC).

Distribution. Species known from Ecuador.



Figs. 136-138. *Cryptorhopalum nitidissimum* Pic, lectotype: 136- habitus, dorsal aspect; 137- pronotum; 138- original labels.

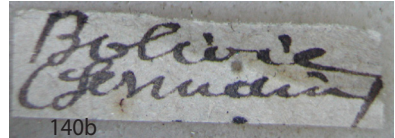
***Cryptorhopalum subcyaneum* Pic, 1927**
(Figs. 139-140)

Cryptorhopalum subcyaneum Pic, 1927b: 5.

Type material. Holotype: „Bolivie (Germain)“ / „subcyaneum n sp“ / „TYPE“ / „Type“, (MNHN).

Additional material: „Bolivia, Guanay, N of La Paz, 19-23.viii.1989, L. Pena“, 1 ♂, J. Háva det., (JHAC).

Distribution. Species known from Bolivia.



Figs. 139-140. *Cryptorhopalum subcyanum* Pic, holotype: 139- habitus, dorsal aspect; 140a-b- original labels.

***Cryptorhopalum perforatum* Pic, 1927**
(Figs. 141-142)

Cryptorhopalum perforatum Pic, 1927a: 185.

Type material. Holotype (♂): „Brésil, Etat de SaoPaolo“ / „Coll. G.“ / „Coll^{on} Le Moul't, Naturaliste, Paris“ / „perforatum n sp“ / „TYPE“ / „Type“, (MNHN).

Remarks. The species belong to „*C. equisolae* species group“. Antennae black, elytra with very large punctures (Fig. 141). Body length 2.1 mm. The species similar to *C. curtum* (Pic) from Bolivia (but *curtum* body length is 3.2 mm and elytra is more finely punctured).

Distribution. Species known from Brazil.



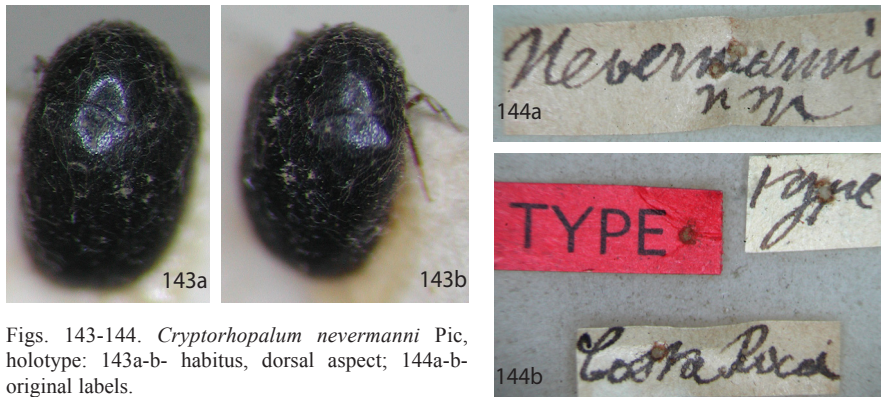
Figs. 141-142. *Cryptorhopalum perforatum* Pic, holotype: 141a-b- habitus, dorsal aspect; 142a-b- original labels.

***Cryptorhopalum nevermanni* Pic, 1936**
(Figs. 143-144)

Cryptorhopalum nevermanni Pic, 1936b: 194

Type material. Holotype: „Costa Rica“ / „Nevermanni n sp“ / „TYPE“ / „Type“, (MNHN).

Additional material: „Costa Rica“, 6 spec., J. Háva det., (MNHN); „Costa Rica: Limon Reventazon, Hamburg Farm, xi:24:1935, leg F. Nevermann“, 1 ♀, J. Háva det., (JHAC).



Figs. 143-144. *Cryptorhopalum nevermanni* Pic, holotype: 143a-b- habitus, dorsal aspect; 144a-b- original labels.

Remarks. The species belong to „*C. equisolae* species group“ (Háva 2015b).

Distribution. Species known from Costa Rica and Panama.

ACKNOWLEDGEMENTS. I am very indebted to Azadeh Taghavian (MNHN) for helping me to study the material in Museum Paris and to my very good friend Jan Hrdlička (Prague, Czech Republic) for collegial help on our shared trip to Paris.

REFERENCES

- HÁVA J. 2015a: *World Catalogue of Insects. Volume 13. Dermestidae (Coleoptera)*. Leiden/Boston: Brill, xxvi + 419 pp.
- HÁVA J. 2015b: Contribution to the knowledge of *Cryptorhopalum equisolae* species group, with description of *Cryptorhopalum occultum* sp. nov. from Argentina (Coleoptera: Dermestidae: Megatominae). *Arquivos Entomolóxicos* 13: 257-260.
- HÁVA J. 2017: *Thaumaglossa navratili* sp. nov. from French Guiana (Coleoptera: Dermestidae: Megatominae). *Arquivos Entomolóxicos* 18: 127-130.
- HERRMANN A., HÁVA J. & KADEJ M. 2015: New Dermestidae (Coleoptera: Bostrichoidea) from Peru. *Arquivos Entomolóxicos* 13: 67-74.
- HERRMANN A., HÁVA J. & KADEJ M. 2017: Two new species of Dermestidae for French Guiana, with description of the male of *Valdesetosum atrum* Háva 2014 (Coleoptera: Dermestidae: Megatomini). *Arquivos Entomolóxicos* 17: 115-118.
- MROCKOWSKI M. 1968: Distribution of the Dermestidae (Coleoptera) of the world with a catalogue of all known species. *Annales Zoologici* 26: 15-191.
- PIC M. 1894: Description de Coléoptères de la faune circa-européenne. *Feuille des Jeunes Naturalistes*, Paris 24: 60-61.
- PIC M. 1904: Coléoptères nouveaux de la Turquie d'Asie. *L'Échange, Revue Linnéenne* 20: 73-74.
- PIC M. 1916a: Diagnoses Spécifiques. *Mélanges Exotico-Entomologiques* 17: 8-20.
- PIC M. 1916b: Diagnoses génériques et spécifiques. *Mélanges Exotico-Entomologiques* 18: 2-20.
- PIC M. 1923: Nouveautés diverses. *Mélanges Exotico-Entomologiques* 40: 3-32.
- PIC M. 1927a: Nouveaux Coléoptères du globe (IV). *Bulletin de la Société zoologique de France* 52: 185-189.
- PIC M. 1927b: Nouveautés diverses. *Mélanges Exotico-Entomologiques* 48: 1-32.
- PIC M. 1928: Nouveaux Coléoptères de la République Argentine. *Revista de la Sociedad Entomológica Argentina* 2: 49-52.
- PIC M. 1929a: Notes diverses, nouveautés. *L'Échange, Revue Linnéenne* 45: 9-10.
- PIC M. 1929b: Nouveautés diverses. *Mélanges Exotico-Entomologiques* 54: 1-36.

- PIC M. 1936a: Nouveautés diverses. *Mélanges Exotico-Entomologiques* 67: 1-36.
- PIC M. 1936b: Nouveaux Coléoptères du Musée zoologique de Hamburg. *Entomologisches Nachrichtenblatt* 10: 193-196.
- PIC M. 1942: Opuscula martialia VII. *L'Échange, Revue Linnéenne* Numéro spécial, 16 pp.
- PIC M. 1954: Ptinidae, Anobiidae, Dermestidae, Byrrhidae (Col.). *Beiträge zur Fauna Perus*, Jena 4: 176-178.
- REITTER E. 1881: Die aussereuropäischen Dermestiden meiner Sammlung. Mit 70 Diagnosen neuer Arten. *Verhandlungen Naturforschenden Vereines Brünn* 19 [1880]: 27-60.
- ZHANTIEV R. D. 2005: Novye i maloizuchennyye vidy zhukov-kozheedov roda *Attagenus* (Coleoptera, Dermestidae). [New and little-known species of the genus *Attagenus* (Coleoptera, Dermestidae).] *Zoologicheskii Zhurnal* 84: 1147-1152. (in Russian, English summary)

Received 11.11.2017
Accepted: 10.12.2017
Printed: 31.3.2018