

Three new species of Ptininae (Coleoptera: Bostrichoidea: Ptinidae) from Eocene Baltic amber

Jiří HÁVA^{1,2} & Petr ZAHRADNÍK³

¹Daugavpils University, Institute of Life Sciences and Technology,
Department of Biosystematics, Vienības Str. 13, Daugavpils, LV - 5401, Latvia

²Private Entomological Laboratory and Collection,
Rýznerova 37, CZ - 252 62 Únětice u Prahy, Praha-západ, Czech Republic
e-mail: jh.dermestidae@volny.cz

³Forestry and Game Management Research Institute
Strnady 136, CZ-150 00 Praha 5 - Zbraslav, Czech Republic
e-mail: zahradnik@vulhm.cz

Taxonomy, new species, fossil species, Coleoptera, Ptinidae, Ptininae, Baltic amber, Russia

Abstract. The following three new species from Eocene Baltic amber are described and illustrated: *Ptinus (Gynopterus) electron* sp. nov., *Ptinus (Gynopterus) fantii* sp. nov. and *Ptinus (Gynopterus) groehni* sp. nov. Three other species are recorded: *Ptinus (Gynopterus) balticus* Bellés & Vitali, 2007 (Poland), *Ptinus (Gynopterus) burukovskiyi* Alekseev, 2014 (Russia), *Ptinus (Gynopterus) scalovicus* Alekseev, 2014 (Russia) and *Sucinoptinus sucini* Bellés & Vitali, 2007 (Russia).

INTRODUCTION

The family Ptinidae, subfamily Ptininae, tribe Ptinini from Eocene Baltic amber was recently studied and new articles were published (Alekseev 2012, 2014, Bellés & Perkovsky 2016, Bellés & Vitali 2007, Bukejs et al. 2018, Alekseev, Bukejs & Bellés 2019). The subfamily contains 10 species from Baltic and Rovno ambers. The present contribution summarizes material of ambers inclusions with Ptinini from collection of Carsten Gröhn (Germany) and offers descriptions of three new species.

The article follows preceding articles dealing with Ptinidae, recently published by the present authors (Zahradník & Háva 2014, 2017 and Háva & Zahradník 2019).

MATERIAL AND METHODS

Species described here were compared with other species from Baltic amber or with data in descriptions. The type material of the newly described species are deposited in the following collections:

GPIH Geologische-Palaentologische Institut of University Hamburg, Germany (coll. Carsten Gröhn);

JHAC Jiří Háva, Private Entomological Laboratory & Collection, Únětice u Prahy, Prague-West, Czech Republic.

The following measurements were made:

Total length (TL) - linear distance from head to apex of elytra.

Elytral width (EW) - maximum linear transverse distance.

Specimens of the presently described species are provided with a red, printed label with the text as follows: „HOLOTYPE (or PARATYPE, respectively) *species name* sp. nov. J. Háva & Petr Zahradník det. 2019”.

RESULTS

Family Ptinidae Subfamily Ptininae

Ptinus (Gynopterus) balticus Bellés & Vitali, 2007

Material examined: 1 spec.: amber inclusion from Baltic amber, Gdansk city area, village called Sztutowo, Poland, bought from amber traders 4242, Artur Michalski, (JHAC).

Remarks. Species described from Russia: Kaliningrad, new to Poland.

Ptinus (Gynopterus) fantii sp. nov. (Figs. 1-3)

Type material. Holotype (♀): amber inclusion from Baltic amber, Jantarnyj, Sambia, Kaliningrad Region, Russia, bought from amber traders C4053, (GPIH). Paratypes: (4 spec., not sexed): the same data but C8022 (JHAC); C8007, C 573, C1311, (GPIH).

Description. Body: TL 2.8 mm, EW 1.6 mm, subparallel-sided, integument uniformly piceous, tarsi dark brown (Figs. 1-2).

Head: antennal insertions close to each other, interantennal space narrow and flat, eyes hemispherical, prominent, finely faceted, ommatidial setae absent, antennae 11-segmented, comparatively long (Fig. 3).

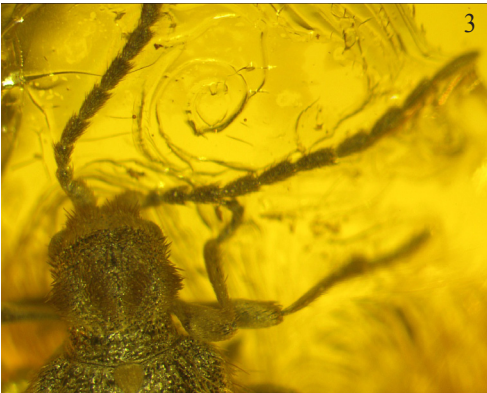
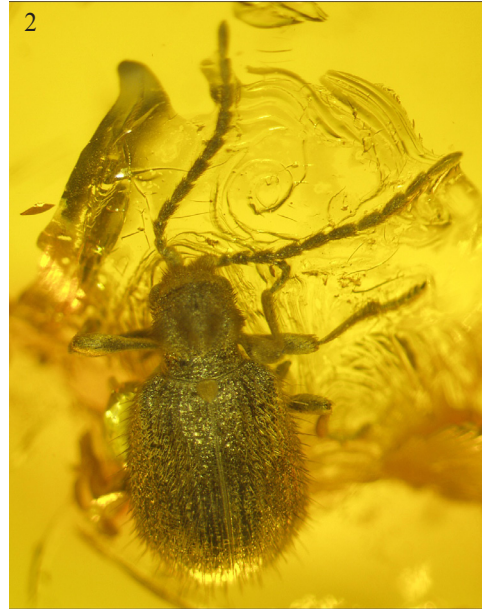
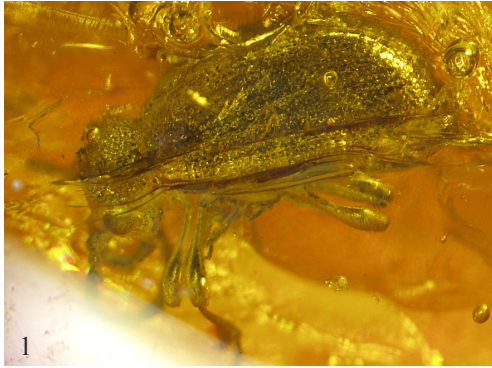
Pronotum (Fig. 3): short and broad with four bumps covered by brown setation.

Scutellum: large, subtriangular, rounded apically, covered by dense and very short accumbent yellowish setation.

Elytra: subparallel in basal part, ovate behind, widest in the middle, 1.1 times as long as wide, humeri with long, narrow bump, surface shining, with fine punctures arranged in regular striae, strial punctures large, round and shallow, regularly spaced, distances between punctures equal to two lengths of each puncture, setation sparse, formed by rows of semierect hairs on intervals and by accumbent hairs in strial punctures.

Abdomen: all five abdominal ventrites delimited, with suture lines well apparent, surface smooth, covered with short, thin and pale hairs.

Legs: tarsal formula 5-5-5, legs relatively robust, trochanter short, its apex not reaching elytral margin, tarsi with broad and equal in length tarsomeres I-IV, penultimate tarsomere not lobed, ultimate tarsomere longer than each of previous, claws simple, long and equal in length.



Figs. 1-3. *Ptinus (Gynopterus) fantii* sp. nov.: 1- habitus of holotype, lateral aspect; 2- habitus of paratype, dorsal aspect; 3- pronotal bumps and antenna.

Differential diagnosis. The new species differs from the known fossil amber species by the four bumps on pronotum and structure of antennae.

Etymology. Dedicated to colleague Fabrizio Fanti (Piazzese, Italy) well known specialist in fossil Cantharidae (Coleoptera).

***Ptinus (Gynopterus) burukovskyi* Alekseev, 2014**

Material examined: 2 spec.: amber inclusion from Baltic amber, Jantarnyj, Sambia, Kaliningrad Region, Russia, bought from amber traders C4469; C7808 (GPIH, JHAC).

***Ptinus (Gynopterus) electron* sp. nov.**

(Figs. 4-6)

Type material. Holotype (not sexed): amber inclusion from Baltic amber, Jantarnyj, Sambia, Kaliningrad Region, Russia, bought from amber traders C4587, (GPIH).

Description. Body: TL 3.1 mm, EW 1.5 mm, subparallel-sided, integument uniformly piceous, tarsi dark brown (Figs. 4-6).

Head: antennal insertions close to each other, interantennal space narrow and flat, eyes hemispherical, prominent, finely faceted, ommatidial setae absent, antennae 11-segmented, comparatively long (Fig. 5).

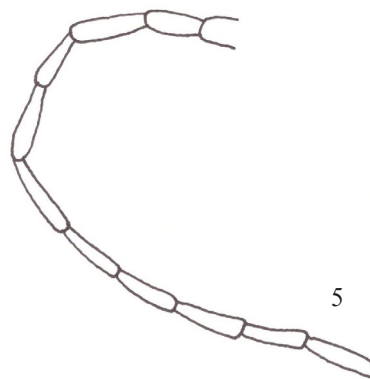
Pronotum (Fig. 4): short and broad with four, small bumps covered by light brown setation.

Scutellum: large, subtriangular, rounded apically, covered by dense and very short accumbent yellowish setation.

Elytra: subparallel in basal part, ovate behind, widest at the middle, long as wide, humeri with long, narrow bump, surface shining, with fine punctures arranged in regular striae, striae punctures large, round and shallow, regularly spaced, distances between punctures equal to two lengths of each puncture, setation sparse, formed by rows of semierect hairs on intervals and by accumbent hairs on striae punctures.

Abdomen: not visible.

Legs: tarsal formula 5-5-5, legs relatively robust and long, trochanter short, its apex not reaching elytral margin, tarsi with broad and equal in length tarsomeres I-IV, penultimate tarsomere not lobed, ultimate tarsomere longer than each of previous, claws simple, long and equal in length.



Figs. 4-6. *Ptinus (Gynopterus) electron* sp. nov.: 4- habitus, dorsal aspect; 5- antenna; 6- habitus, lateral aspect.

Differential diagnosis. The new species is similar to *Ptinus (Gynopterus) fantii* sp. nov. but differs from it by the long antennomeres and small pronotal bumps.

Etymology. Named after the Latin word electron (electrum).

Ptinus (Gynopterus) groehni sp. nov.
(Figs. 7-8)

Type material. Holotype (♀): amber inclusion from Baltic amber, Jantarnyj, Sambia, Kaliningrad Region, Russia, bought from amber traders C1048, (GPIH) [inclusion included a moth specimen].

Description. Body: TL 2.5 mm, EW 1.3 mm, subparallel-sided, integument uniformly piceous, tarsi dark brown (Figs. 7).

Head: antennal insertions close to each other, interantennal space narrow and flat, eyes hemispherical, prominent, finely faceted, ommatidial setae absent, antennae 11-segmented, comparatively short (Fig. 8).

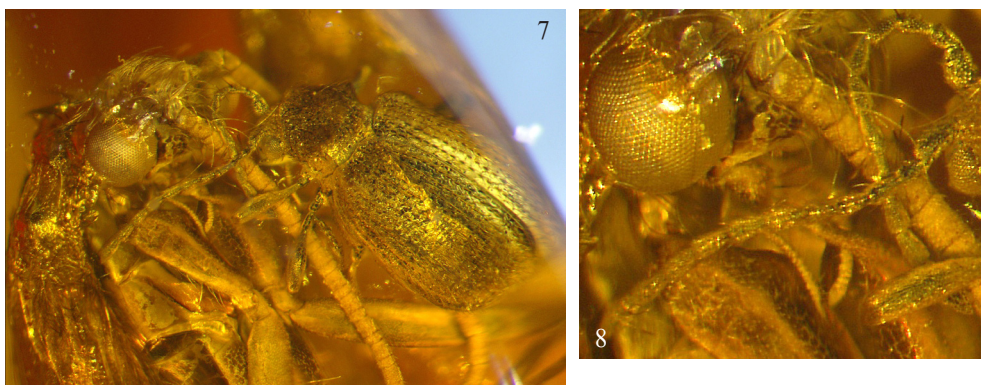
Pronotum (Fig. 7): black, short and broad with four, small bumps covered by dark brown setation.

Scutellum: large, subtriangular, rounded apically, covered by short accumbent black setation.

Elytra: subparallel in basal part, ovate behind, widest at the middle, as long as wide, humeri with small, narrow bump, surface shining, with fine punctures arranged in regular striae, strial punctures large, round and shallow, regularly spaced, distances between punctures equal to two lengths of each puncture, setation sparse, formed by rows of semierect hairs on intervals and by accumbent hairs on strial punctures.

Abdomen: not visible.

Legs: tarsal formula 5-5-5, legs relatively robust and long, trochanter short, its apex not reaching elytral margin, tarsi with broad and equal in length tarsomeres I–IV, penultimate tarsomere not lobed, ultimate tarsomere longer than each of previous, claws simple, long and equal in length.



Figs. 7-8. *Ptinus (Gynopterus) groehni* sp. nov.: 7- habitus, dorsal aspect; 8- antenna.

Differential diagnosis. The new species is similar to *Ptinus (Gynopterus) fantii* sp. nov. and *Ptinus (Gynopterus) electron* sp. nov. but differs from them by the structure of antennae and black pronotum.

Etymology. Dedicated to our friend and amber specialist Carten Gröhn (Glinde, Germany).

***Ptinus (Gynopterus) scalovicus* Alekseev, 2014**

Material examined: 2 spec.: amber inclusion from Baltic amber, Jantarnyj, Sambia, Kaliningrad Region, Russia, bought from amber traders C1044; C7743 (GPIH, JHAC).

***Sucinoptinus sucini* Bellés & Vitali, 2007**

Material examined: 1 spec.: amber inclusion from Baltic amber, Jantarnyj, Sambia, Kaliningrad Region, Russia, bought from amber traders C913, (CGPC).

Remarks. Species described from Poland, new for Russia.

LIST OF SUBFAMILY PTININAE SPECIES
KNOWN FROM BALTIC AND ROVNO AMBERS

BA - Baltic amber

RA - Rovno amber

<i>Dignomus francescovitalii</i> Bukejs, Bellés & Alekseev, 2018	BA	Russia
<i>Dignoptinus regiomontanus</i> (Alekseev, 2014)	BA	Russia
<i>Ptinus (Gynopterus) anastasiae</i> Alekseev, 2014	BA	Russia
<i>Ptinus (Gynopterus) balticus</i> Bellés & Vitali, 2007	BA	Poland, Russia
<i>Ptinus (Gynopterus) burukovskiyi</i> Alekseev, 2014	BA	Russia
<i>Ptinus (Gynopterus) electron</i> sp. nov.	BA	Russia
<i>Ptinus (Gynopterus) fantii</i> sp. nov.	BA	Russia
<i>Ptinus (Gynopterus) groehni</i> sp. nov.	BA	Russia
<i>Ptinus (Gynopterus) scalovicus</i> Alekseev, 2014	BA	Russia
<i>Sucinoptinus brevipennis</i> Bellés & Perkovsky, 2016	RA	Ukraine
<i>Sucinoptinus bukejsi</i> Alekseev, 2012	BA	Russia
<i>Sucinoptinus rovnoensis</i> Bellés & Perkovsky, 2016	RA	Ukraine
<i>Sucinoptinus sucini</i> Bellés & Vitali, 2007	BA	Poland, Russia

ACKNOWLEDGEMENTS. We are very grateful to Carsten Gröhn (Germany) and Artur Michalski (Poland) for providing us with the interesting material.

REFERENCES

ALEKSEEV V. I. 2012: *Sucinoptinus bukejsi* sp. nov. (Coleoptera: Ptinidae: Ptinini), the second species of the Tertiary genus from the Baltic amber. *Baltic Journal of Coleopterology* 12(2): 145-148.

- ALEKSEEV V. I. 2014: New fossil species of Ptinidae (Insecta: Coleoptera) in Baltic amber (Tertiary, Eocene). *Zoology and Ecology* 24(3): 239-255.
- ALEKSEEV V. I., BUKEJS A. & BELLÉS X. 2019: *Dignoptinus*, a new genus for fossil *Dignomus regiomontanus* Alekseev from Eocene Baltic amber, and new status for *Bruchoptinus* Reitter and *Pseudoptinus* Reitter (Coleoptera: Ptinidae). *Fossil Record* 22: 65-72.
- BELLÉS X. & VITALI F. 2007: New fossil spider beetles from Baltic amber (Coleoptera Ptinidae). *Entomapeiron* P.S. 2: 17-28.
- BELLÉS X. & PERKOVSKY E. E. 2016: New data on the genus *Sucinoptinus* (Coleoptera, Ptinidae) from Rovno Amber. *Vestnik Zoologii* 50(1): 17-22.
- BUKEJS A., BELLÉS X. & ALEKSEEV V. I. 2018: A new species of *Dignomus* Wollaston (Coleoptera: Ptinidae) from Eocene Baltic amber. *Zootaxa* 4486(2): 195-200.
- HÁVA J. & ZAHRADNÍK P. 2019: A new *Falsogastrallus* Pic, 1914 species (Coleoptera: Ptinidae) from Eocene Baltic amber. *Studies and Reports, Taxonomical Series* 15(1): 59-62.
- ZAHRADNÍK P. & HÁVA J. 2014: New Ptinidae (Coleoptera: Bostrichoidea) from Baltic amber with a list of known fossil species. *Studies and Reports, Taxonomical Series* 10(2): 629-646.
- ZAHRADNÍK P. & HÁVA J. 2017: Three new species of *Trichodesma* LeConte, 1861 from Baltic Amber (Coleoptera: Ptinidae: Anobiinae). *Folia Heyrovskyana, Series A* 25(1): 89-92.

Received: 17.9.2019
Accepted: 20.10.2019
Printed: 31.3.2020

